



**AIM**QUALIFICATIONS

Handbook  

---

for centre staff



# AIM Qualifications

Suite of Pre-Access Qualifications

“

I would like to convey my thanks to you all at AIM for the support and guidance you have provided during our first year as a training centre. I am aware we have asked a lot of questions and sent a lot of emails and you have dealt with every query swiftly and efficiently combined with a lot of patience.

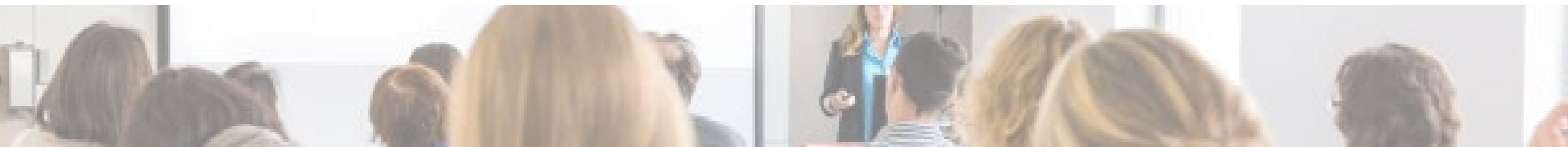
It has been a roller coaster of a year setting up everything from scratch but it has been made easier by having access to you all.

*Carol Harmston, AIM Centre*

”

## Document Version History

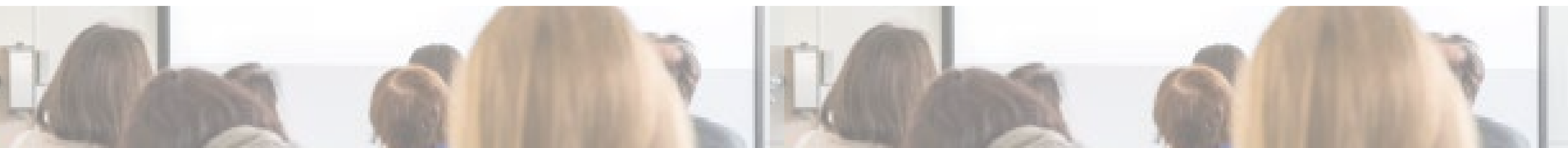
Version Number	Date	Description
2	March 2019	- Following review TQT values updated ( <i>see pages 4 - 17</i> )
3	May 2019	- Operational start dates for all qualifications amended for accuracy ( <i>see pages 3 - 16</i> ) - Geographical coverage updated ( <i>see pages 3 - 16</i> )
4	September 2019	- Rebranded document: 'AIM Awards' changed to 'AIM Qualifications' - Qualification family added to qualification details grid ( <i>see pages 3-16</i> )
5	September 2020	- <b>Added the following qualifications:</b> ( <i>see pages 16 - 17</i> ) 'AIM Qualifications Level 2 Award in Computing (603/6498/1)' 'AIM Qualifications Level 2 Certificate in Computing (603/6499/3)' 'AIM Qualifications Level 2 Extended Certificate in Computing (603/6500/6)'
6	January 2022	- <b>Qualification withdrawal dates added for:</b> ( <i>see pages 3 - 15</i> ) 'AIM Qualifications Level 2 Award in Applied Science and Engineering (603/2240/8)' 'AIM Qualifications Level 2 Certificate in Applied Science and Engineering (601/5747/1)' 'AIM Qualifications Level 2 Extended Certificate in Applied Science and Engineering (603/2241/X)' 'AIM Qualifications Level 2 Award in Humanities (603/2251/2)' 'AIM Qualifications Level 2 Certificate in Humanities (603/2252/4)' 'AIM Qualifications Level 2 Extended Certificate in Humanities (603/2253/6)' 'AIM Qualifications Level 2 Award in Social Care (603/2249/4)' 'AIM Qualifications Level 2 Certificate in Social Care (601/5749/5)' 'AIM Qualifications Level 2 Extended Certificate in Social Care (603/2250/0)' 'AIM Qualifications Level 2 Award in Social Science (603/2254/8)' 'AIM Qualifications Level 2 Certificate in Social Science (603/2257/3)'



Version Number	Date	Description
6 cont...	January 2022	<p><b>- Qualification review dates extended for: (see pages 3 - 15)</b></p> <p>'AIM Qualifications Level 2 Award in Computing (603/6498/1)'</p> <p>'AIM Qualifications Level 2 Certificate in Computing (603/6499/3)'</p> <p>'AIM Qualifications Level 2 Extended Certificate in Computing (603/6500/6)'</p> <p>'AIM Qualifications Level 2 Award in Business and Law (603/2244/5)'</p> <p>'AIM Qualifications Level 2 Certificate in Business and Law (601/7606/4)'</p> <p>'AIM Qualifications Level 2 Extended Certificate in Business and Law (603/2256/1)'</p> <p>'AIM Qualifications Level 2 Award in Health Professions (603/2247/0)'</p> <p>'AIM Qualifications Level 2 Certificate in Health Professions (601/5748/3)'</p> <p>'AIM Qualifications Level 2 Extended Certificate in Health Professions (603/2248/2)'</p> <p>'AIM Qualifications Level 2 Extended Certificate in Social Science (603/2255/X)'</p>

## Contents

Introduction .....	1
About Us .....	1
<b>Section One - Qualification Overview .....</b>	<b>2</b>
About These Qualifications .....	3
Applied Science and Engineering Qualification Details .....	3
Business and Law Qualification Details .....	6
Health Professions Qualification Details .....	8
Humanities Qualification Details .....	10
Social Science Qualification Details .....	12
Social Care Qualification Details .....	14
Computing Qualification Details .....	16
Total Qualification Time and Guided Learning Hours .....	18
Progression Opportunities .....	18
Entry Guidance .....	18
Qualification Dates .....	18
Resource Requirements .....	18
<b>Section Two - Qualification Structure and Components .....</b>	<b>19</b>
Qualification Structure and Components .....	20
<b>Section Three - Assessment .....</b>	<b>35</b>
Centre Staff Requirements .....	36
How this Qualification is Assessed .....	37



# Contents

<b>Section Four - Operational Guidance .....</b>	<b>43</b>
Offering these Qualifications.....	44
Approval to Offer Qualifications.....	44
Registration and Certification.....	44
Fees and Charges .....	44
<b>Section Five - Appendices and Links.....</b>	<b>45</b>



# Introduction

---

Welcome to the AIM Qualifications Suite of Pre-Access Qualifications Handbook. This handbook contains everything you need to know about this qualification and is intended for tutors, assessors, internal verifiers and other staff involved with the planning, delivery and assessment.

This is a live document and as such will be updated when required. You will be informed via email when changes are made and it is your responsibility to ensure the most up-to-date version of the Qualification Handbook is in use.

## About Us

AIM Qualifications and Assessments is a national and international awarding organisation. We offer a large number of regulated qualifications at different levels and in a wide range of subject areas, access to Higher Education diplomas and end-point assessments. Our products are flexible enough to be delivered in a range of settings, from small providers to large colleges and in the workplace both nationally and internationally. We pride ourselves on offering the best possible customer service, and are always on hand to help if you have any questions. Our organisational structure and business processes enable us to be able to respond quickly to the needs of customers to develop new products that meet their specific needs.

# Section One

## Qualification Overview



# About These Qualifications

These qualifications are aimed at learners who wish to return to study and prepare for application to a QAA Access to Higher Education programme. These qualifications are also aimed at learners who may benefit from alternative approaches to curriculum and learning as the flexibility of assessment allows them to generate evidence in a range of ways. They provide knowledge and skills for progression, and may run parallel to GCSE provision.

The flexible design of these qualifications allow learners to obtain credits from different areas of study to allow programmes of learning to be tailored to individual learner needs before they undertake an Access to HE programme.

## Applied Science and Engineering Qualification Details

Qualifications	
AIM Qualifications Level 2 Award in Applied Science and Engineering <b>(WITHDRAWING 31/07/2022)</b> AIM Qualifications Level 2 Certificate in Applied Science and Engineering <b>(WITHDRAWING 31/07/2022)</b> AIM Qualifications Level 2 Extended Certificate in Applied Science and Engineering <b>(WITHDRAWING 31/07/2022)</b>	
Qualification Family	Flexibilities
Assessment	Internally assessed and externally moderated assessment evidence. In order for learners to be prepared for further study, we expect a range of study skills to be developed and assessed whilst achieving this qualification. <a href="#">The pre-access assessment strategy detailing the requirements can be found on our website.</a>
Grading	Assessment is competent/not competent. There is no grading
Progression Opportunities	Learners would typically progress onto an Access to Higher Education programme and/or further learning and study
Geographical Coverage	<b>Award:</b> England, Wales <b>Certificate:</b> England, Wales and Northern Ireland <b>Extended Certificate:</b> England, Wales
Operational Start Date	<b>Award:</b> 01/08/2017 <b>Certificate:</b> 01/06/2015 <b>Extended certificate:</b> 01/08/2017
Last Learner Registration Date	<b>31/07/2022</b>

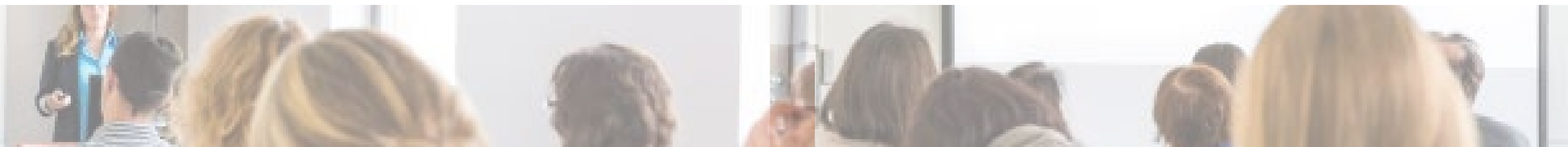


## Applied Science and Engineering Qualification Details

Last Certification Date	<b>31/07/2025</b>
Sector	Applied Science and Engineering: 2.1 Science
Qualification Number	Award: 603/2240/8 Certificate: 601/5747/1 Extended Certificate: 603/2241/X
Learning Aim Reference	Award: 60322408 Certificate: 60157471 Extended Certificate: 6032241X
Credit Value	Award: 9 Certificate: 18 Extended Certificate: 27
Guided Learning Hours (GLH)	Award: 84 Certificate: 174 Extended Certificate: 264

## Applied Science and Engineering Qualification Details

Rules of Combination	<p><b>Level 2 Award</b> - Learners must achieve <b>9 credits</b> in total to achieve this qualification. Learners must achieve <b>3 credits</b> from the essential components and a minimum of <b>6 credits</b> from the chosen components. All credits are at Level 2. In order for learners to be prepared for further study, we expect a range of study skills to be developed and assessed whilst achieving this qualification. <a href="#">The pre-access assessment strategy detailing the requirements can be found on our website.</a></p>
	<p><b>Level 2 Certificate</b> - Learners must achieve <b>18 credits</b> in total to achieve this qualification. Learners must achieve <b>3 credits</b> from the essential components and a minimum of <b>15 credits</b> from the chosen components. All credits are at Level 2. In order for learners to be prepared for further study, we expect a range of study skills to be developed and assessed whilst achieving this qualification. <a href="#">The pre-access assessment strategy detailing the requirements can be found on our website.</a></p>
	<p><b>Level 2 Extended Certificate</b> - Learners must achieve <b>27 credits</b> in total to achieve this qualification. Learners must achieve <b>3 credits</b> from the essential components and a minimum of <b>24 credits</b> from the chosen components. All credits are at Level 2. In order for learners to be prepared for further study, we expect a range of study skills to be developed and assessed whilst achieving this qualification. <a href="#">The pre-access assessment strategy detailing the requirements can be found on our website.</a></p>



## Business and Law Qualification Details

Qualifications	
AIM Qualifications Level 2 Award in Business and Law AIM Qualifications Level 2 Certificate in Business and Law AIM Qualifications Level 2 Extended Certificate in Business and Law	
Qualification Family	Flexibilities
Assessment	Internally assessed and externally moderated assessment evidence. In order for learners to be prepared for further study, we expect a range of study skills to be developed and assessed whilst achieving this qualification. <a href="#">The pre-access assessment strategy detailing the requirements can be found on our website.</a>
Grading	Assessment is competent/not competent. There is no grading
Progression Opportunities	Learners would typically progress onto an Access to Higher Education programme and/or further learning and study
Geographical Coverage	<b>Award:</b> England, Wales <b>Certificate:</b> England, Wales, Northern Ireland <b>Extended Certificate:</b> England, Wales
Operational Start Date	<b>Award:</b> 01/08/2017 <b>Certificate:</b> 01/09/2015 <b>Extended Certificate:</b> 01/08/2017
Review Date	31/12/2023
Sector	<b>Business and Law Professions:</b> 15.3 Business Management
Qualification Number	<b>Award:</b> 603/2244/5 <b>Certificate:</b> 601/7606/4 <b>Extended Certificate:</b> 603/2256/1
Learning Aim Reference	<b>Award:</b> 60322445 <b>Certificate:</b> 60176064 <b>Extended Certificate:</b> 60322561
Credit Value	<b>Award:</b> 9 <b>Certificate:</b> 18 <b>Extended Certificate:</b> 27
Guided Learning Hours (GLH)	<b>Award:</b> 84 <b>Certificate:</b> 174 <b>Extended Certificate:</b> 264

[Back to Contents](#)

6

## Business and Law Qualification Details

Total Qualification Time (TQT)	<b>Award:</b> 90 <b>Certificate:</b> 180 <b>Extended Certificate:</b> 270
Learner Age	16-18; 19+
Rules of Combination	<p><b>Level 2 Award</b> - Learners must achieve <b>9 credits</b> in total to achieve this qualification. Learners must achieve <b>3 credits</b> from the essential components and a minimum of <b>6 credits</b> from the chosen components. All credits are at Level 2. In order for learners to be prepared for further study, we expect a range of study skills to be developed and assessed whilst achieving this qualification. <a href="#">The pre-access assessment strategy detailing the requirements can be found on our website.</a></p> <p><b>Level 2 Certificate</b> - Learners must achieve <b>18 credits</b> in total to achieve this qualification. Learners must achieve <b>3 credits</b> from the essential components and a minimum of <b>15 credits</b> from the chosen components. All credits are at Level 2. In order for learners to be prepared for further study, we expect a range of study skills to be developed and assessed whilst achieving this qualification. <a href="#">The pre-access assessment strategy detailing the requirements can be found on our website.</a></p> <p><b>Level 2 Extended Certificate</b> - Learners must achieve <b>27 credits</b> in total to achieve this qualification. Learners must achieve <b>3 credits</b> from the essential components and a minimum of <b>24 credits</b> from the chosen components. All credits are at Level 2. In order for learners to be prepared for further study, we expect a range of study skills to be developed and assessed whilst achieving this qualification. <a href="#">The pre-access assessment strategy detailing the requirements can be found on our website.</a></p>

[Back to Contents](#)

7





## Health Professions Qualification Details

Qualifications	
AIM Qualifications Level 2 Award in Health Professions AIM Qualifications Level 2 Certificate in Health Professions AIM Qualifications Level 2 Extended Certificate in Health Professions	
Qualification Family	Flexibilities
Assessment	Internally assessed and externally moderated assessment evidence. In order for learners to be prepared for further study, we expect a range of study skills to be developed and assessed whilst achieving this qualification. <a href="#">The pre-access assessment strategy detailing the requirements can be found on our website.</a>
Grading	Assessment is competent/not competent. There is no grading
Progression Opportunities	Learners would typically progress onto an Access to Higher Education programme and/or further learning and study
Geographical Coverage	<b>Award:</b> England, Wales <b>Certificate:</b> England, Wales, Northern Ireland <b>Extended Certificate:</b> England, Wales
Operational Start Date	<b>Award:</b> 01/08/2017 <b>Certificate:</b> 01/06/2015 <b>Extended Certificate:</b> 01/08/2017
Review Date	31/12/2023
Sector	<b>Health Professions:</b> 1.3 Health and Social Care
Qualification Number	<b>Award:</b> 603/2247/0 <b>Certificate:</b> 601/5748/3 <b>Extended Certificate:</b> 603/2248/2
Learning Aim Reference	<b>Award:</b> 60322470 <b>Certificate:</b> 60157483 <b>Extended Certificate:</b> 60322482
Credit Value	<b>Award:</b> 9 <b>Certificate:</b> 18 <b>Extended Certificate:</b> 27
Guided Learning Hours (GLH)	<b>Award:</b> 84 <b>Certificate:</b> 174 <b>Extended Certificate:</b> 264

## Health Professions Qualification Details

Total Qualification Time (TQT)	<b>Award:</b> 90 <b>Certificate:</b> 180 <b>Extended Certificate:</b> 270
Learner Age	16-18; 19+
Rules of Combination	<p><b>Level 2 Award</b> - Learners must achieve <b>9 credits</b> in total to achieve this qualification. Learners must achieve <b>3 credits</b> from the essential components and a minimum of <b>6 credits</b> from the chosen components. All credits are at Level 2. In order for learners to be prepared for further study, we expect a range of study skills to be developed and assessed whilst achieving this qualification. <a href="#">The pre-access assessment strategy detailing the requirements can be found on our website.</a></p> <p><b>Level 2 Certificate</b> - Learners must achieve <b>18 credits</b> in total to achieve this qualification. Learners must achieve <b>3 credits</b> from the essential components and a minimum of <b>15 credits</b> from the chosen components. All credits are at Level 2. In order for learners to be prepared for further study, we expect a range of study skills to be developed and assessed whilst achieving this qualification. <a href="#">The pre-access assessment strategy detailing the requirements can be found on our website.</a></p> <p><b>Level 2 Extended Certificate</b> - Learners must achieve <b>27 credits</b> in total to achieve this qualification. Learners must achieve <b>3 credits</b> from the essential components and a minimum of <b>24 credits</b> from the chosen components. All credits are at Level 2. In order for learners to be prepared for further study, we expect a range of study skills to be developed and assessed whilst achieving this qualification. <a href="#">The pre-access assessment strategy detailing the requirements can be found on our website.</a></p>



## Humanities Qualification Details

Qualifications	
AIM Qualifications Level 2 Award in Humanities <b>(WITHDRAWING 31/07/2022)</b>	
AIM Qualifications Level 2 Certificate in Humanities <b>(WITHDRAWING 31/07/2022)</b>	
AIM Qualifications Level 2 Extended Certificate in Humanities <b>(WITHDRAWING 31/07/2022)</b>	
Qualification Family	Flexibilities
Assessment	Internally assessed and externally moderated assessment evidence. In order for learners to be prepared for further study, we expect a range of study skills to be developed and assessed whilst achieving this qualification. <a href="#">The pre-access assessment strategy detailing the requirements can be found on our website.</a>
Grading	Assessment is competent/not competent. There is no grading
Progression Opportunities	Learners would typically progress onto an Access to Higher Education programme and/or further learning and study
Geographical Coverage	England, Wales
Operational Start Date	Award: 01/08/2017 Certificate: 01/08/2017 Extended Certificate: 01/08/2017
Last Learner Registration Date	<b>31/07/2022</b>
Last Certification Date	<b>31/07/2025</b>
Sector	Humanities: 12.1 Languages, Literature and Culture of the British Isles
Qualification Number	Award: 603/2251/2 Certificate: 603/2252/4 Extended Certificate: 603/2253/6
Learning Aim Reference	Award: 60322512 Certificate: 60322524 Extended Certificate: 60322536
Credit Value	Award: 9 Certificate: 18 Extended Certificate: 27
Guided Learning Hours (GLH)	Award: 84 Certificate: 174 Extended Certificate: 264

## Humanities Qualification Details

Total Qualification Time (TQT)	Award: 90 Certificate: 180 Extended Certificate: 270
Learner Age	16-18; 19+
Rules of Combination	<p><b>Level 2 Award</b> - Learners must achieve <b>9 credits</b> in total to achieve this qualification. Learners must achieve <b>3 credits</b> from the essential components and a minimum of <b>6 credits</b> from the chosen components. All credits are at Level 2. In order for learners to be prepared for further study, we expect a range of study skills to be developed and assessed whilst achieving this qualification. <a href="#">The pre-access assessment strategy detailing the requirements can be found on our website.</a></p> <p><b>Level 2 Certificate</b> - Learners must achieve <b>18 credits</b> in total to achieve this qualification. Learners must achieve <b>3 credits</b> from the essential components and a minimum of <b>15 credits</b> from the chosen components. All credits are at Level 2. In order for learners to be prepared for further study, we expect a range of study skills to be developed and assessed whilst achieving this qualification. <a href="#">The pre-access assessment strategy detailing the requirements can be found on our website.</a></p> <p><b>Level 2 Extended Certificate</b> - Learners must achieve <b>27 credits</b> in total to achieve this qualification. Learners must achieve <b>3 credits</b> from the essential components and a minimum of <b>24 credits</b> from the chosen components. All credits are at Level 2. In order for learners to be prepared for further study, we expect a range of study skills to be developed and assessed whilst achieving this qualification. <a href="#">The pre-access assessment strategy detailing the requirements can be found on our website.</a></p>



## Social Science Qualification Details

Qualifications	
AIM Qualifications Level 2 Award in Social Science <b>(WITHDRAWING 31/07/2022)</b>	
AIM Qualifications Level 2 Certificate in Social Science <b>(WITHDRAWING 31/07/2022)</b>	
AIM Qualifications Level 2 Extended Certificate in Social Science	
Qualification Family	Flexibilities
Assessment	Internally assessed and externally moderated assessment evidence. In order for learners to be prepared for further study, we expect a range of study skills to be developed and assessed whilst achieving this qualification. <a href="#">The pre-access assessment strategy detailing the requirements can be found on our website.</a>
Grading	Assessment is competent/not competent. There is no grading
Progression Opportunities	Learners would typically progress onto an Access to Higher Education programme and/or further learning and study
Geographical Coverage	England, Wales
Operational Start Date	Award: 01/08/2017 Certificate: 01/08/2017 Extended Certificate: 01/08/2017
Review Date	Extended Certificate: 31/12/2023
Last Learner Registration Date	Award: <b>31/07/2022</b> Certificate: <b>31/07/2022</b>
Last Certification Date	Award: <b>31/07/2025</b> Certificate: <b>31/07/2025</b>
Sector	Social Science: 11.2 Sociology and Social Policy
Qualification Number	Award: 603/2254/8 Certificate: 603/2257/3 Extended Certificate: 603/2255/X
Learning Aim Reference	Award: 60322548 Certificate: 60322573 Extended Certificate: 6032255X
Credit Value	Award: 9 Certificate: 18 Extended Certificate: 27
Guided Learning Hours (GLH)	Award: 84 Certificate: 174 Extended Certificate: 264

12

## Social Science Qualification Details

Total Qualification Time (TQT)	Award: 90 Certificate: 180 Extended Certificate: 270
Learner Age	16-18; 19+
Rules of Combination	<p><b>Level 2 Award</b> - Learners must achieve <b>9 credits</b> in total to achieve this qualification. Learners must achieve <b>3 credits</b> from the essential components and a minimum of <b>6 credits</b> from the chosen components. All credits are at Level 2. In order for learners to be prepared for further study, we expect a range of study skills to be developed and assessed whilst achieving this qualification. <a href="#">The pre-access assessment strategy detailing the requirements can be found on our website.</a></p> <p><b>Level 2 Certificate</b> - Learners must achieve <b>18 credits</b> in total to achieve this qualification. Learners must achieve <b>3 credits</b> from the essential components and a minimum of <b>15 credits</b> from the chosen components. All credits are at Level 2. In order for learners to be prepared for further study, we expect a range of study skills to be developed and assessed whilst achieving this qualification. <a href="#">The pre-access assessment strategy detailing the requirements can be found on our website.</a></p> <p><b>Level 2 Extended Certificate</b> - Learners must achieve <b>27 credits</b> in total to achieve this qualification. Learners must achieve <b>3 credits</b> from the essential components and a minimum of <b>24 credits</b> from the chosen components. All credits are at Level 2. In order for learners to be prepared for further study, we expect a range of study skills to be developed and assessed whilst achieving this qualification. <a href="#">The pre-access assessment strategy detailing the requirements can be found on our website.</a></p>

Back to Contents

13



## Social Care Qualification Details

Qualifications	
AIM Qualifications Level 2 Award in Social Care <b>(WITHDRAWING 31/07/2022)</b>	
AIM Qualifications Level 2 Certificate in Social Care <b>(WITHDRAWING 31/07/2022)</b>	
AIM Qualifications Level 2 Extended Certificate in Social Care <b>(WITHDRAWING 31/07/2022)</b>	
Qualification Family	Flexibilities
Assessment	Internally assessed and externally moderated assessment evidence. In order for learners to be prepared for further study, we expect a range of study skills to be developed and assessed whilst achieving this qualification. <a href="#">The pre-access assessment strategy detailing the requirements can be found on our website.</a>
Grading	Assessment is competent/not competent. There is no grading
Progression Opportunities	Learners would typically progress onto an Access to Higher Education programme and/or further learning and study
Geographical Coverage	<b>Award:</b> England, Wales <b>Certificate:</b> England, Wales and Northern Ireland <b>Extended Certificate:</b> England, Wales
Operational Start Date	<b>Award:</b> 01/08/2017 <b>Certificate:</b> 01/06/2015 <b>Extended Certificate:</b> 01/08/2017
Last Learner Registration Date	<b>31/07/2022</b>
Last Certification Date	<b>31/07/2025</b>
Sector	<b>Social Care:</b> 1.3 Health and Social Care
Qualification Number	<b>Award:</b> 603/2249/4 <b>Certificate:</b> 601/5749/5 <b>Extended Certificate:</b> 603/2250/0
Learning Aim Reference	<b>Award:</b> 60322494 <b>Certificate:</b> 60157495 <b>Extended Certificate:</b> 60322500
Credit Value	<b>Award:</b> 9 <b>Certificate:</b> 18 <b>Extended Certificate:</b> 27

## Social Care Qualification Details

Total Qualification Time (TQT)	<b>Award:</b> 90 <b>Certificate:</b> 180 <b>Extended Certificate:</b> 270
Learner Age	16-18; 19+
Rules of Combination	<p><b>Level 2 Award</b> - Learners must achieve <b>9 credits</b> in total to achieve this qualification. Learners must achieve <b>3 credits</b> from the essential components and a minimum of <b>6 credits</b> from the chosen components. All credits are at Level 2. In order for learners to be prepared for further study, we expect a range of study skills to be developed and assessed whilst achieving this qualification. <a href="#">The pre-access assessment strategy detailing the requirements can be found on our website.</a></p> <p><b>Level 2 Certificate</b> - Learners must achieve <b>18 credits</b> in total to achieve this qualification. Learners must achieve <b>3 credits</b> from the essential components and a minimum of <b>15 credits</b> from the chosen components. All credits are at Level 2. In order for learners to be prepared for further study, we expect a range of study skills to be developed and assessed whilst achieving this qualification. <a href="#">The pre-access assessment strategy detailing the requirements can be found on our website.</a></p> <p><b>Level 2 Extended Certificate</b> - Learners must achieve <b>27 credits</b> in total to achieve this qualification. Learners must achieve <b>3 credits</b> from the essential components and a minimum of <b>24 credits</b> from the chosen components. All credits are at Level 2. In order for learners to be prepared for further study, we expect a range of study skills to be developed and assessed whilst achieving this qualification. <a href="#">The pre-access assessment strategy detailing the requirements can be found on our website.</a></p>



## Computing Qualification Details

Qualifications	
AIM Qualifications Level 2 Award in Computing AIM Qualifications Level 2 Certificate in Computing AIM Qualifications Level 2 Extended Certificate in Computing	
Qualification Family	Flexibilities
Assessment	Internally assessed and externally moderated assessment evidence. In order for learners to be prepared for further study, we expect a range of study skills to be developed and assessed whilst achieving this qualification. <a href="#">The pre-access assessment strategy detailing the requirements can be found on our website.</a>
Grading	Assessment is competent/not competent. There is no grading
Progression Opportunities	Learners would typically progress onto an Access to Higher Education programme and/or further learning and study
Geographical Coverage	England, Wales
Operational Start Date	Award: 01/11/2020 Certificate: 01/11/2020 Extended Certificate: 01/11/2020
Review Date	31/12/2023
Sector	Information and Communication Technology: 6.1 ICT for Users
Qualification Number	Award: 603/6498/1 Certificate: 603/6499/3 Extended Certificate: 603/6500/6
Learning Aim Reference	Award: 60364981 Certificate: 60364993 Extended Certificate: 60365006
Credit Value	Award: 9 Certificate: 18 Extended Certificate: 27
Guided Learning Hours (GLH)	Award: 84 Certificate: 174 Extended Certificate: 264

## Computing Qualification Details

Total Qualification Time (TQT)	Award: 90 Certificate: 180 Extended Certificate: 270
Learner Age	16-18; 19+
Rules of Combination	<p><b>Level 2 Award</b> - Learners must achieve <b>9 credits</b> in total to achieve this qualification. Learners must achieve <b>3 credits</b> from the essential components and a minimum of <b>6 credits</b> from the chosen components. All credits are at Level 2. In order for learners to be prepared for further study, we expect a range of study skills to be developed and assessed whilst achieving this qualification. <a href="#">The pre-access assessment strategy detailing the requirements can be found on our website.</a></p> <p><b>Level 2 Certificate</b> - Learners must achieve <b>18 credits</b> in total to achieve this qualification. Learners must achieve <b>3 credits</b> from the essential components and a minimum of <b>15 credits</b> from the chosen components. All credits are at Level 2. In order for learners to be prepared for further study, we expect a range of study skills to be developed and assessed whilst achieving this qualification. <a href="#">The pre-access assessment strategy detailing the requirements can be found on our website.</a></p> <p><b>Level 2 Extended Certificate</b> - Learners must achieve <b>27 credits</b> in total to achieve this qualification. Learners must achieve <b>3 credits</b> from the essential components and a minimum of <b>24 credits</b> from the chosen components. All credits are at Level 2. In order for learners to be prepared for further study, we expect a range of study skills to be developed and assessed whilst achieving this qualification. <a href="#">The pre-access assessment strategy detailing the requirements can be found on our website.</a></p>



## Total Qualification Time and Guided Learning Hours

Total Qualification Time (TQT) is the number of notional hours it takes a typical learner to achieve the full qualification and is made up of two elements:

- the minimum number of Qualification Guided Learning Hours (GLH) - the number of Tutor-led contact hours
- the number of hours spent on preparation, studying and the assessment that is non-guided

For example, the number of tutor-led contact hours (GLH) for a qualification is 30 and the number of hours spent by the learner (non-GLH) on preparation, studying and the assessment is six hours. Therefore the Total Qualification Time (TQT) for the qualification is 36 hours.

## Progression Opportunities

Learners can progress onto a range of other training programmes and/or employment in customer focused vocational areas.

## Entry Guidance

There are no specific entry requirements for this qualification.

## Qualification Dates

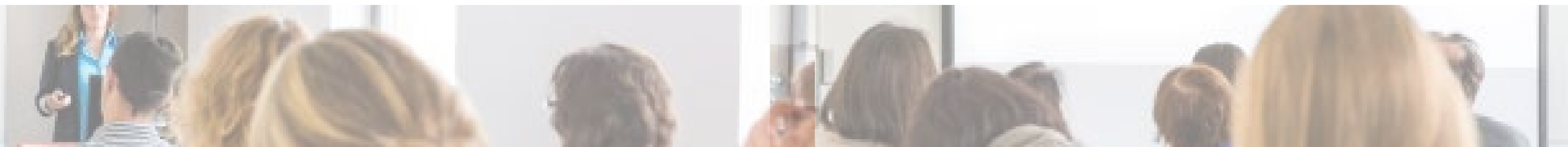
The qualification review date is the date by which we will have carried out a review of the qualification. We work with sector representatives to make any changes necessary to meet sector needs and to reflect recent developments. In most cases, we'll extend the qualification and set a new review date. If we make a decision to withdraw a qualification, we'll set an operational end date.

We will post information relating to changes or extensions to qualifications on our website and centres approved to offer the qualification will be kept updated. The certification end date will be three years from the operational end date.

## Resource Requirements

There are no specific resource requirements for these qualifications. You must ensure that your centre has appropriate resources in place to deliver the component(s) in these qualifications.

## Qualification Structure and Components



## Qualification Structure and Components

This section details the rules of combinations for these qualifications. Select the component titles to view the component details.

### Rules of combination for: AIM Qualifications Level 2 Award in Applied Science and Engineering

Learners must achieve **9 credits** in total to achieve this qualification. Learners must achieve **3 credits** from the essential components and a minimum of **6 credits** from the chosen components. All credits are at Level 2. In order for learners to be prepared for further study, we expect a range of study skills to be developed and assessed whilst achieving this qualification. [The pre-access assessment strategy detailing the requirements can be found on our website.](#)

### Rules of combination for: AIM Qualifications Level 2 Certificate in Applied Science and Engineering

Learners must achieve **18 credits** in total to achieve this qualification. Learners must achieve **3 credits** from the essential components and a minimum of **15 credits** from the chosen components. All credits are at Level 2. In order for learners to be prepared for further study, we expect a range of study skills to be developed and assessed whilst achieving this qualification. [The pre-access assessment strategy detailing the requirements can be found on our website.](#)

### Rules of combination for: AIM Qualifications Level 2 Extended Certificate in Applied Science and Engineering

Learners must achieve **27 credits** in total to achieve this qualification. Learners must achieve **3 credits** from the essential components and a minimum of **24 credits** from the chosen components. All credits are at Level 2. In order for learners to be prepared for further study, we expect a range of study skills to be developed and assessed whilst achieving this qualification. [The pre-access assessment strategy detailing the requirements can be found on our website.](#)

## Applied Science and Engineering Components

Component Code	Component Title	Level	Credit value	GLH
<b>Essential</b>				
L/504/8572	Investigating a Career	Two	3	24
<b>Chosen</b>				
A/507/0678	Human Health and Disease	Two	3	30
F/507/0679	Human Physiology	Two	6	60
T/507/0677	Physiology and Exercise	Two	6	60
T/507/0680	Skeleton and Muscles	Two	3	30
A/507/0681	The Cardiovascular System	Two	3	30
A/507/0714	Atomic Structure	Two	2	20
Y/507/0686	Chemistry: Structure and Changes	Two	3	30
R/507/0685	Human Life Processes	Two	2	20
D/507/0687	Physics	Two	4	40
H/507/0691	Physics: Physical Processes	Two	3	30
K/507/0692	Science: Practical Investigation	Two	2	20



### Rules of combination for: AIM Qualifications Level 2 Award in Business and Law

Learners must achieve **9 credits** in total to achieve this qualification. Learners must achieve **3 credits** from the essential components and a minimum of **6 credits** from the chosen components. All credits are at Level 2. In order for learners to be prepared for further study, we expect a range of study skills to be developed and assessed whilst achieving this qualification. [The pre-access assessment strategy detailing the requirements can be found on our website.](#)

### Rules of combination for: AIM Qualifications Level 2 Certificate in Business and Law

Learners must achieve **18 credits** in total to achieve this qualification. Learners must achieve **3 credits** from the essential components and a minimum of **15 credits** from the chosen components. All credits are at Level 2. In order for learners to be prepared for further study, we expect a range of study skills to be developed and assessed whilst achieving this qualification. [The pre-access assessment strategy detailing the requirements can be found on our website.](#)

### Rules of combination for: AIM Qualifications Level 2 Extended Certificate in Business and Law

Learners must achieve **27 credits** in total to achieve this qualification. Learners must achieve **3 credits** from the essential components and a minimum of **24 credits** from the chosen components. All credits are at Level 2. In order for learners to be prepared for further study, we expect a range of study skills to be developed and assessed whilst achieving this qualification. [The pre-access assessment strategy detailing the requirements can be found on our website.](#)

## Business and Law Components

Component Code	Component Title	Level	Credit value	GLH
<b>Essential</b>				
L/504/8572	Investigating a Career	Two	3	24
<b>Chosen</b>				
T/507/7760	Business Accounting	Two	3	30
A/507/7761	Business and the Economy	Two	3	30
F/507/7762	Business Finance	Two	3	30
J/507/7763	Business Planning	Two	4	40
L/507/7764	Business Techniques	Two	3	30
R/507/7765	Company Law	Two	4	40
Y/507/7766	Crisis in Business Management	Two	1	10
D/507/7767	Ethics in Business	Two	1	10
H/507/7768	External Influences in Business	Two	3	30
K/507/7769	Financial Accounting	Two	6	60
D/507/7770	Human Resources	Two	3	30
H/507/7771	Legal Aspects of Business	Two	3	30
K/507/7772	Management Accounting	Two	6	60
M/507/7773	Managing People	Two	3	30
T/507/7774	Marketing Research and Strategies	Two	3	30
A/507/7775	Marketing Tools	Two	4	40
F/507/7776	Organisational Structures	Two	3	30
J/507/7777	Quality and Customer Care	Two	3	30
L/507/7778	Actus Reus and Mens Rea	Two	3	30





## Business and Law Components

Component Code	Component Title	Level	Credit value	GLH
<b>Chosen</b>				
R/507/7779	Consumer Law	Two	3	30
J/507/7780	Contract Law	Two	3	30
L/507/7781	Criminal and Youth Justice – The Legal Framework	Two	4	40
R/507/7782	Employment Law	Two	3	30
Y/507/7783	English Law	Two	3	30
D/507/7784	European Union Law	Two	3	30
H/507/7785	General Defences	Two	6	60
K/507/7786	Homicide	Two	3	30
M/507/7787	Human Rights	Two	3	30
T/507/7788	Law and SMEs	Two	3	30
A/507/7789	Non-Fatal Offences Against the Person	Two	3	30
M/507/7790	Property Offences	Two	6	60
T/507/7791	The English Legal System	Two	6	60
A/507/7792	The Law of Tort	Two	3	30
F/507/7793	The Powers of the Police	Two	3	30
J/507/7794	Youth Justice - Practice	Two	3	30

### Rules of combination for: AIM Qualifications Level 2 Award in Health Professions

Learners must achieve **9 credits** in total to achieve this qualification. Learners must achieve **3 credits** from the essential components and a minimum of **6 credits** from the chosen components. All credits are at Level 2. In order for learners to be prepared for further study, we expect a range of study skills to be developed and assessed whilst achieving this qualification. [The pre-access assessment strategy detailing the requirements can be found on our website.](#)

### Rules of combination for: AIM Qualifications Level 2 Certificate in Health Professions

Learners must achieve **18 credits** in total to achieve this qualification. Learners must achieve **3 credits** from the essential components and a minimum of **15 credits** from the chosen components. All credits are at Level 2. In order for learners to be prepared for further study, we expect a range of study skills to be developed and assessed whilst achieving this qualification. [The pre-access assessment strategy detailing the requirements can be found on our website.](#)

### Rules of combination for: AIM Qualifications Level 2 Extended Certificate in Health Professions

Learners must achieve **27 credits** in total to achieve this qualification. Learners must achieve **3 credits** from the essential components and a minimum of **24 credits** from the chosen components. All credits are at Level 2. In order for learners to be prepared for further study, we expect a range of study skills to be developed and assessed whilst achieving this qualification. [The pre-access assessment strategy detailing the requirements can be found on our website.](#)



## Health Professions Components

Component Code	Component Title	Level	Credit value	GLH
<b>Essential</b>				
L/504/8572	Investigating a Career	Two	3	24
<b>Chosen</b>				
A/507/0678	Human Health and Disease	Two	3	30
F/507/0679	Human Physiology	Two	6	60
T/507/0677	Physiology and Exercise	Two	6	60
T/507/0680	Skeleton and Muscles	Two	3	30
A/507/0681	The Cardiovascular System	Two	3	30
J/507/0702	Barriers to Health	Two	1	10
Y/507/0705	Diet and Nutrition	Two	2	20
D/507/0706	Eating Disorders	Two	1	10
L/507/0703	Health Care Practice	Two	6	60
R/507/0704	Health Promotion in Care Settings	Two	3	30
H/507/0707	Understanding Mental Health	Two	3	30
F/507/0696	Health Psychology	Two	3	30
A/507/0695	Psychology	Two	3	30
T/507/0694	Psychopathology	Two	3	30
M/507/0693	Social Psychology	Two	3	30
J/507/0697	Development of Social Policy	Two	3	30
L/507/0698	Ethical Issues in Social Policy	Two	3	30
R/507/0699	Introduction to Sociology	Two	3	30
A/507/0700	Research Methods in Sociology	Two	3	30
F/507/0701	The Sociology of Health	Two	3	30

### Rules of combination for: AIM Qualifications Level 2 Award in Humanities

Learners must achieve **9 credits** in total to achieve this qualification. Learners must achieve **3 credits** from the essential components and a minimum of **6 credits** from the chosen components. All credits are at Level 2. In order for learners to be prepared for further study, we expect a range of study skills to be developed and assessed whilst achieving this qualification. [The pre-access assessment strategy detailing the requirements can be found on our website.](#)

### Rules of combination for: AIM Qualifications Level 2 Certificate in Humanities

Learners must achieve **18 credits** in total to achieve this qualification. Learners must achieve **3 credits** from the essential components and a minimum of **15 credits** from the chosen components. All credits are at Level 2. In order for learners to be prepared for further study, we expect a range of study skills to be developed and assessed whilst achieving this qualification. [The pre-access assessment strategy detailing the requirements can be found on our website.](#)

### Rules of combination for: AIM Qualifications Level 2 Extended Certificate in Humanities

Learners must achieve **27 credits** in total to achieve this qualification. Learners must achieve **3 credits** from the essential components and a minimum of **24 credits** from the chosen components. All credits are at Level 2. In order for learners to be prepared for further study, we expect a range of study skills to be developed and assessed whilst achieving this qualification. [The pre-access assessment strategy detailing the requirements can be found on our website.](#)



## Humanities Components

Component Code	Component Title	Level	Credit value	GLH
<b>Essential</b>				
L/504/8572	Investigating a Career	Two	3	24
<b>Chosen</b>				
Y/616/0740	Appreciation of a Play	Two	3	30
L/616/0752	Appreciation of Poetry	Two	3	30
D/616/0755	Critical Theory	Two	3	30
M/616/0758	Language and Gender	Two	3	30
T/616/0759	Non-Fiction Creative Writing	Two	3	30
R/616/0767	The Play in Performance	Two	3	30
A/616/0777	Conservation	Two	3	30
A/616/0780	Ecology	Two	3	30
L/616/0783	Energy and Life	Two	3	30
L/616/0797	Fluvial Environments	Two	3	30
Y/616/0804	Plate Tectonics and Volcanoes	Two	3	30
M/616/0808	Pollution and Human Population	Two	3	30
R/616/0817	American History - Civil Rights	Two	3	30
Y/504/9742	Introduction to History	Two	3	30
R/616/0820	Origins of the First World War	Two	3	30
D/616/0822	The Suffragette Movement	Two	3	30
K/616/0824	The Third Reich Ideology and Propaganda	Two	3	30
M/616/0825	Victorian Society and its Values	Two	3	30
F/616/0828	Economic Policy and British Politics	Two	3	30
J/616/0829	International Current Affairs	Two	3	30

### Rules of combination for: AIM Qualifications Level 2 Award in Social Science

Learners must achieve **9 credits** in total to achieve this qualification. Learners must achieve **3 credits** from the essential components and a minimum of **6 credits** from the chosen components. All credits are at Level 2. In order for learners to be prepared for further study, we expect a range of study skills to be developed and assessed whilst achieving this qualification. [The pre-access assessment strategy detailing the requirements can be found on our website.](#)

### Rules of combination for: AIM Qualifications Level 2 Certificate in Social Science

Learners must achieve **18 credits** in total to achieve this qualification. Learners must achieve **3 credits** from the essential components and a minimum of **15 credits** from the chosen components. All credits are at Level 2. In order for learners to be prepared for further study, we expect a range of study skills to be developed and assessed whilst achieving this qualification. [The pre-access assessment strategy detailing the requirements can be found on our website.](#)

### Rules of combination for: AIM Qualifications Level 2 Extended Certificate in Social Science

Learners must achieve **27 credits** in total to achieve this qualification. Learners must achieve **3 credits** from the essential components and a minimum of **24 credits** from the chosen components. All credits are at Level 2. In order for learners to be prepared for further study, we expect a range of study skills to be developed and assessed whilst achieving this qualification. [The pre-access assessment strategy detailing the requirements can be found on our website.](#)



## Social Science Components

Component Code	Component Title	Level	Credit value	GLH
<b>Essential</b>				
L/504/8572	Investigating a Career	Two	3	24
<b>Chosen</b>				
Y/616/0740	Appreciation of a Play	Two	3	30
L/616/0752	Appreciation of Poetry	Two	3	30
D/616/0755	Critical Theory	Two	3	30
M/616/0758	Language and Gender	Two	3	30
T/616/0759	Non-Fiction Creative Writing	Two	3	30
R/616/0767	The Play in Performance	Two	3	30
M/507/0693	Social Psychology	Two	3	30
T/507/0694	Psychopathology	Two	3	30
A/507/0695	Psychology	Two	3	30
F/507/0696	Health Psychology	Two	3	30
J/507/0697	Development of Social Policy	Two	3	30
L/507/0698	Ethical Issues in Social Policy	Two	3	30
R/507/0699	Introduction to Sociology	Two	3	30
A/507/0700	Research Methods in Sociology	Two	3	30
F/507/0701	The Sociology of Health	Two	3	30
F/616/0828	Economic Policy and British Politics	Two	3	30
J/616/0829	International Current Affairs	Two	3	30

### Rules of combination for: AIM Qualifications Level 2 Award in Social Care

Learners must achieve **9 credits** in total to achieve this qualification. Learners must achieve **3 credits** from the essential components and a minimum of **6 credits** from the chosen components. All credits are at Level 2. In order for learners to be prepared for further study, we expect a range of study skills to be developed and assessed whilst achieving this qualification. [The pre-access assessment strategy detailing the requirements can be found on our website.](#)

### Rules of combination for: AIM Qualifications Level 2 Certificate in Social Care

Learners must achieve **18 credits** in total to achieve this qualification. Learners must achieve **3 credits** from the essential components and a minimum of **15 credits** from the chosen components. All credits are at Level 2. In order for learners to be prepared for further study, we expect a range of study skills to be developed and assessed whilst achieving this qualification. [The pre-access assessment strategy detailing the requirements can be found on our website.](#)

### Rules of combination for: AIM Qualifications Level 2 Extended Certificate in Social Care

Learners must achieve **27 credits** in total to achieve this qualification. Learners must achieve **3 credits** from the essential components and a minimum of **24 credits** from the chosen components. All credits are at Level 2. In order for learners to be prepared for further study, we expect a range of study skills to be developed and assessed whilst achieving this qualification. [The pre-access assessment strategy detailing the requirements can be found on our website.](#)



## Social Care Components

Component Code	Component Title	Level	Credit value	GLH
<b>Essential</b>				
L/504/8572	Investigating a Career	Two	3	24
<b>Chosen</b>				
J/507/0702	Barriers to Health	Two	1	10
Y/507/0705	Diet and Nutrition	Two	2	20
D/507/0706	Eating Disorders	Two	1	10
L/507/0703	Health Care Practice	Two	6	60
R/507/0704	Health Promotion in Care Settings	Two	3	30
H/507/0707	Understanding Mental Health	Two	3	30
F/507/0696	Health Psychology	Two	3	30
A/507/0695	Psychology	Two	3	30
T/507/0694	Psychopathology	Two	3	30
M/507/0693	Social Psychology	Two	3	30
J/507/0697	Development of Social Policy	Two	3	30
L/507/0698	Ethical Issues in Social Policy	Two	3	30
R/507/0699	Introduction to Sociology	Two	3	30
A/507/0700	Research Methods in Sociology	Two	3	30
F/507/0701	The Sociology of Health	Two	3	30

### Rules of combination for: AIM Qualifications Level 2 Award in Computing

Learners must achieve **9 credits** in total to achieve this qualification. Learners must achieve **3 credits** from the essential components and a minimum of **6 credits** from the chosen components. All credits are at Level 2. In order for learners to be prepared for further study, we expect a range of study skills to be developed and assessed whilst achieving this qualification. [The pre-access assessment strategy detailing the requirements can be found on our website.](#)

### Rules of combination for: AIM Qualifications Level 2 Certificate in Computing

Learners must achieve **18 credits** in total to achieve this qualification. Learners must achieve **3 credits** from the essential components and a minimum of **15 credits** from the chosen components. All credits are at Level 2. In order for learners to be prepared for further study, we expect a range of study skills to be developed and assessed whilst achieving this qualification. [The pre-access assessment strategy detailing the requirements can be found on our website.](#)

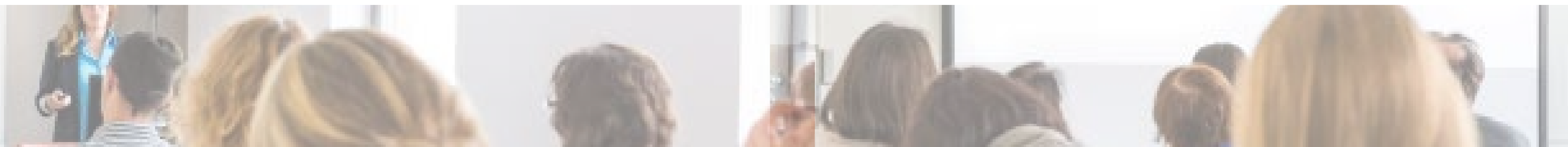
### Rules of combination for: AIM Qualifications Level 2 Extended Certificate in Computing

Learners must achieve **27 credits** in total to achieve this qualification. Learners must achieve **3 credits** from the essential components and a minimum of **24 credits** from the chosen components. All credits are at Level 2. In order for learners to be prepared for further study, we expect a range of study skills to be developed and assessed whilst achieving this qualification. [The pre-access assessment strategy detailing the requirements can be found on our website.](#)



### Computing Components

Component Code	Component Title	Level	Credit value	GLH
<b>Essential</b>				
L/504/8572	Investigating a Career	Two	3	24
<b>Chosen</b>				
R/618/4043	Big Data	Two	3	30
K/618/4038	Cloud Computing	Two	4	40
H/618/4040	Developing A Website	Two	4	40
Y/618/4097	Developing Programming Solutions	Two	4	40
M/502/4555	Database Software	Two	4	30
T/502/4573	Design Software	Two	4	30
Y/502/4257	IT Security For Users	Two	2	15
H/502/4245	Optimise IT System Performance	Two	4	30
M/502/4619	Project Management Software	Two	4	30
R/502/4399	Specialist Software	Two	3	20
F/502/4379	Using Collaborative Technologies	Two	4	30
K/502/4375	Using Mobile IT Devices	Two	2	15



## Centre Staff Requirements

As an Awarding Organisation, we require that:

Tutors have relevant teaching experience and/or a qualification and experience and/or a qualification in the relevant subject area. Suitable teaching qualifications include:

- Level 3 or 4 Preparing to Teach in the Lifelong Learning Sector (PTLLS) or above
- Level 3 Education and Training or above
- Diploma or Certificate in Education
- Bachelors or Masters Degree in Education

Assessors have an assessor qualification or evidence of recent relevant experience. Suitable assessor qualifications include:

- Level 3 Award in Assessing Competence in the Work Environment
- Level 3 Certificate in Assessing Vocational Achievement
- A1 Assess Candidate Performance using a Range of Methods
- D32 Assess Candidate Performance and D33 Assess Candidate using Differing Sources of Evidence

Internal Verifiers (IV) have an internal verification qualification or evidence of recent relevant experience. Suitable internal verification qualifications include:

- Level 4 Award in Internal Quality Assurance of Assessment Processes and Practice
- Level 4 Certificate in Leading the Internal Quality Assurance of Assessment Processes and Practice
- V1 Conduct Internal Quality Assurance of the Assessment Process
- D34 Internally Verify the Assessment Process

## How this Qualification is Assessed

This qualification is assessed through an internally set, internally marked and externally verified portfolio of evidence. [The pre-access assessment strategy detailing the requirements can be found on our website.](#)

A summary of the assessment of each component is shown below. Guidance on our expectations is available in the [AIM Qualifications: Assessment Handbook](#).

Component Code	Component Title	Level	Set by the centre			Set by AIM		
			Portfolio of evidence	Exam	Practical	Portfolio of evidence	Exam	Practical
L/504/8572	Investigating a Career	Two	✓	–	✓	–	–	–
L/507/7778	Actus Reus and Mens Rea	Two	✓	–	–	–	–	–
R/616/0817	American History - Civil Rights	Two	✓	–	–	–	–	–
Y/616/0740	Appreciation of a Play	Two	✓	–	–	–	–	–
L/616/0752	Appreciation of Poetry	Two	✓	–	–	–	–	–
A/507/0714	Atomic Structure	Two	✓	–	–	–	–	–
J/507/0702	Barriers to Health	Two	✓	–	–	–	–	–
L/507/7781	Criminal and Youth Justice - The Legal Framework	Two	✓	–	–	–	–	–
T/507/7760	Business Accounting	Two	✓	–	–	–	–	–
A/507/7761	Business and the Economy	Two	✓	–	–	–	–	–
F/507/7762	Business Finance	Two	✓	–	–	–	–	–
J/507/7763	Business Planning	Two	✓	–	–	–	–	–
L/507/7764	Business Techniques	Two	✓	–	–	–	–	–
Y/507/0686	Chemistry: Structure and Changes	Two	✓	–	–	–	–	–



Components			Set by the centre			Set by AIM		
Component Code	Component Title	Level	Portfolio of evidence	Exam	Practical	Portfolio of evidence	Exam	Practical
R/507/7765	Company Law	Two	✓	–	–	–	–	–
A/616/0777	Conservation	Two	✓	–	✓	–	–	–
R/507/7779	Consumer Law	Two	✓	–	✓	–	–	–
J/507/7780	Contract Law	Two	✓	–	✓	–	–	–
Y/507/7766	Crisis in Business Management	Two	✓	–	✓	–	–	–
J/507/0697	Development of Social Policy	Two	✓	–	–	–	–	–
Y/507/0705	Diet and Nutrition	Two	✓	–	–	–	–	–
D/507/0706	Eating Disorders	Two	✓	–	–	–	–	–
A/616/0780	Ecology	Two	✓	–	✓	–	–	–
F/616/0828	Economic Policy and British Politics	Two	✓	–	–	–	–	–
R/507/7782	Employment Law	Two	✓	–	✓	–	–	–
L/616/0783	Energy and Life	Two	✓	–	✓	–	–	–
Y/507/7783	English Law	Two	✓	–	✓	–	–	–
L/507/0698	Ethical Issues in Social Policy	Two	✓	–	✓	–	–	–
D/507/7767	Ethics in Business	Two	✓	–	✓	–	–	–
D/507/7784	European Union Law	Two	✓	–	✓	–	–	–
H/507/7768	External Influences in Business	Two	✓	–	✓	–	–	–
K/507/7769	Financial Accounting	Two	✓	–	✓	–	–	–
L/616/0797	Fluvial Environments	Two	✓	–	✓	–	–	–

Components			Set by the centre			Set by AIM		
Component Code	Component Title	Level	Portfolio of evidence	Exam	Practical	Portfolio of evidence	Exam	Practical
H/507/7785	General Defences	Two	✓	–	✓	–	–	–
L/507/0703	Health Care Practice	Two	✓	–	✓	–	–	–
A/507/0678	Human Health and Disease	Two	✓	–	✓	–	–	–
R/507/0685	Human Life Processes	Two	✓	–	✓	–	–	–
F/507/0679	Human Physiology	Two	✓	–	✓	–	–	–
F/507/0696	Health Psychology	Two	✓	–	✓	–	–	–
K/507/7786	Homicide	Two	✓	–	✓	–	–	–
D/507/7770	Human Resources	Two	✓	–	✓	–	–	–
M/507/7787	Human Rights	Two	✓	–	✓	–	–	–
J/616/0829	International Current Affairs	Two	✓	–	✓	–	–	–
Y/504/9742	Introduction to History	Two	✓	–	✓	–	–	–
R/507/0699	Introduction to Sociology	Two	✓	–	✓	–	–	–
M/616/0758	Language and Gender	Two	✓	–	✓	–	–	–
T/507/7788	Law and SMEs	Two	✓	–	✓	–	–	–
H/507/7771	Legal Aspects of Business	Two	✓	–	✓	–	–	–
K/507/7772	Management Accounting	Two	✓	–	✓	–	–	–
M/507/7773	Managing People	Two	✓	–	✓	–	–	–
T/507/7774	Marketing Research and Strategies	Two	✓	–	✓	–	–	–
A/507/7775	Marketing Tools	Two	✓	–	✓	–	–	–





Components		Set by the centre			Set by AIM			
Component Code	Component Title	Level	Portfolio of evidence	Exam	Practical	Portfolio of evidence	Exam	Practical
A/507/7789	Non-Fatal Offences Against the Person	Two	✓	–	✓	–	–	–
T/616/0759	Non-Fiction Creative Writing	Two	✓	–	✓	–	–	–
F/507/7776	Organisational Structures	Two	✓	–	✓	–	–	–
R/616/0820	Origins of the First World War	Two	✓	–	✓	–	–	–
D/507/0687	Physics	Two	✓	–	✓	–	–	–
H/507/0691	Physics: Physical Processes	Two	✓	–	✓	–	–	–
T/507/0677	Physiology and Exercise	Two	✓	–	✓	–	–	–
Y/616/0804	Plate Tectonics and Volcanoes	Two	✓	–	✓	–	–	–
M/616/0808	Pollution and Human Population	Two	✓	–	✓	–	–	–
M/507/7790	Property Offences	Two	✓	–	✓	–	–	–
A/507/0695	Psychology	Two	✓	–	✓	–	–	–
T/507/0694	Psychopathology	Two	✓	–	✓	–	–	–
J/507/7777	Quality and Customer Care	Two	✓	–	✓	–	–	–
A/507/0700	Research Methods in Sociology	Two	✓	–	✓	–	–	–
K/507/0692	Science: Practical Investigation	Two	✓	–	✓	–	–	–
T/507/0680	Skeleton and Muscles	Two	✓	–	✓	–	–	–
M/507/0693	Social Psychology	Two	✓	–	✓	–	–	–
A/507/0681	The Cardiovascular System	Two	✓	–	✓	–	–	–
T/507/7791	The English Legal System	Two	✓	–	✓	–	–	–

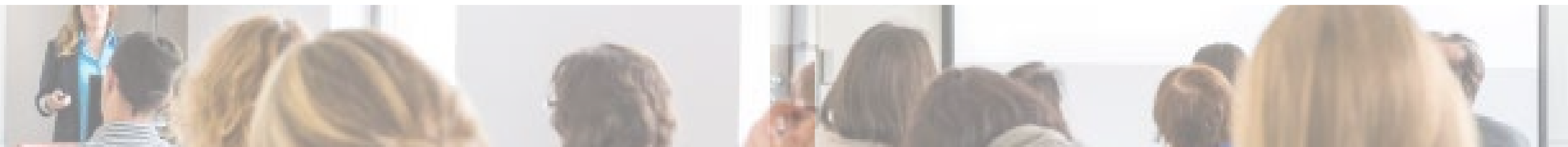
Components		Set by the centre			Set by AIM			
Component Code	Component Title	Level	Portfolio of evidence	Exam	Practical	Portfolio of evidence	Exam	Practical
A/507/7792	The Law of Tort	Two	✓	–	✓	–	–	–
R/616/0767	The Play in Performance	Two	✓	–	✓	–	–	–
F/507/0701	The Sociology of Health	Two	✓	–	✓	–	–	–
F/507/7793	The Powers of the Police	Two	✓	–	✓	–	–	–
F/507/0701	The Sociology of Health	Two	✓	–	✓	–	–	–
D/616/0822	The Suffragette Movement	Two	✓	–	✓	–	–	–
K/616/0824	The Third Reich Ideology and Propaganda	Two	✓	–	✓	–	–	–
H/507/0707	Understanding Mental Health	Two	✓	–	✓	–	–	–
M/616/0825	Victorian Society and its Values	Two	✓	–	✓	–	–	–
J/507/7794	Youth Justice - Practice	Two	✓	–	✓	–	–	–
R/618/4043	Big Data	Two	✓	–	–	–	–	–
K/618/4038	Cloud Computing	Two	✓	–	–	–	–	–
H/618/4040	Developing A Website	Two	✓	–	✓	–	–	–
Y/618/4097	Developing Programming Solutions	Two	✓	–	✓	–	–	–
M/502/4555	Database Software	Two	✓	–	✓	–	–	–
T/502/4573	Design Software	Two	✓	–	✓	–	–	–
Y/502/4257	IT Security For Users	Two	✓	–	–	–	–	–
H/502/4245	Optimise IT System Performance	Two	✓	–	✓	–	–	–
M/502/4619	Project Management Software	Two	✓	–	✓	–	–	–



# Section Four

## Operational Guidance

Components			Set by the centre			Set by AIM		
<i>Component Code</i>	<i>Component Title</i>	<i>Level</i>	<i>Portfolio of evidence</i>	<i>Exam</i>	<i>Practical</i>	<i>Portfolio of evidence</i>	<i>Exam</i>	<i>Practical</i>
R/502/4399	Specialist Software	Two	✓	–	✓	–	–	–
F/502/4379	Using Collaborative Technologies	Two	✓	–	✓	–	–	–
K/502/4375	Using Mobile IT Devices	Two	✓	–	✓	–	–	–



## Offering these Qualifications

---

Centres wishing to offer this qualification must be an AIM recognised centre. New centres can apply to become a centre using the centre recognition application process on our website: [www.aim-group.org.uk](http://www.aim-group.org.uk).

We can advise centres of the best and most efficient methods for offering this qualification. All procedures for the use of this qualification, including approval, registration of learners, verification and certification will be completed through AIM and all centres will have an allocated customer experience advisor to support them.

### Approval to Offer Qualifications

Centres wishing to offer this qualification must complete and submit a Qualification Approval request. [This can be found on the AIM website when choosing a qualification](#). Some qualifications require centres to have specific resources in place and/or their assessors/internal verifiers should hold certain qualifications. Where this is the case, centres must provide evidence of resources/staff qualifications when completing the Qualification Approval request.

### Registration and Certification

Once your centre has approval to offer a qualification, you will be able to register learners via the AIM Online Portal. Learners must be registered onto the correct programme via the Portal. Centres then select their chosen components.

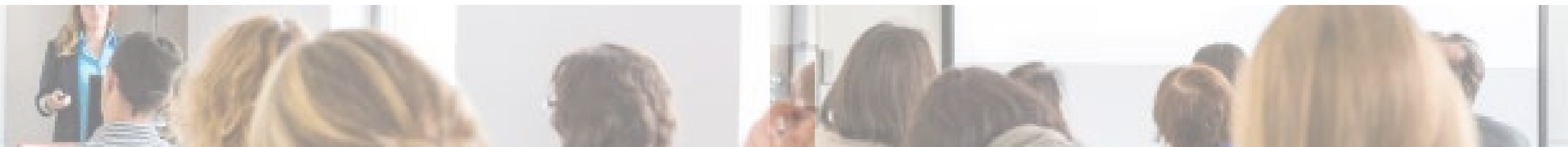
For all registration and certification processes, please refer to the portal guidance document which can be downloaded from our [centre handbooks and forms](#) page. Details of assessment, internal verification and external verification can be found in the [AIM Qualifications: Assessment Handbook](#).

Learners achieving a qualification will be issued with a qualification certificate detailing the achieved qualification and components. Learners who have not achieved a qualification will, on request, be issued with a component certificate detailing the components achieved.

### Fees and Charges

The AIM Fees and Charges brochure includes all qualification charges and is [available on our website](#). Please note that registrations will not be processed if centre fees have not been paid.

## Appendices and Links



## Appendices and Links

Select an appendix or link from the list below to view the document.

### Useful Links

Link 1 - [Access to HE: pre-access assessment strategy](#)

Link 2 - [AIM Centre handbooks and forms](#)

Link 3 - [AIM Qualifications: Assessment Handbook](#)

Link 4 - [AIM Website](#)

Link 5 - [Fees and Charges](#)

Link 6 - [Qualification Search](#)



+44 (0)1332 341822



[enquiries@aim-group.org.uk](mailto:enquiries@aim-group.org.uk)



[www.aim-group.org.uk](http://www.aim-group.org.uk)

AIM Qualifications and Assessment Group  
3 Pride Point Drive  
Pride Park  
Derby  
DE24 8BX

