



AIMQUALIFICATIONS

Handbook

for centre staff



AIM Qualifications

Suite of Personal and Social Development Skills Qualifications

Version 9 - March 2022

“ I would like to convey my thanks to you all at AIM for the support and guidance you have provided during our first year as a training centre. I am aware we have asked a lot of questions and sent a lot of emails and you have dealt with every query swiftly and efficiently combined with a lot of patience.

It has been a roller coaster of a year setting up everything from scratch but it has been made easier by having access to you all.

Carol Harmston, AIM Centre

”

Document Version History

Version Number	Date	Description
2	01/05/2018	Implementation of version 2 qualification, where the total credits required at some levels/sizes have been increased and some component credit sizes increased. Please contact your Business Development Manager for further clarification.
3	26/03/2019	Addition of 'Guidance for using Entry 1 Assessment Continuum and Exemplar Learner Transcripts' in appendices (page 75).
4	September 2019	Rebrand - 'AIM Awards' changed to 'AIM Qualifications' Qualification family added to qualification details grid (pages 9-13)
5	08/01/2020	Geographical coverage updated to include Wales (pages 9-13)
6	June 2021	Additional information added following the implementation of new optional online Multiple Choice Question (MCQ) assessment method: Page 14: Resource requirements Page 71: How these qualifications are assessed Page 73: Scheduling learners for the online Multiple Choice Question (MCQ) assessments Page 74: Delivering the MCQ assessments Page 74: At the end of the MCQ assessments
7	September 2021	New component added: Domestic Abuse and Mental Well-Being L2 (page 39)



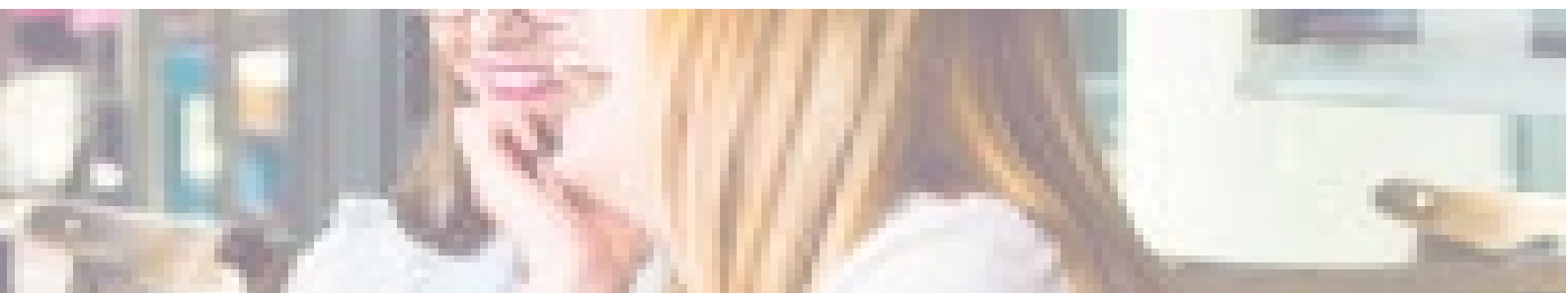
Version Number	Date	Description
8	January 2022	<p>- Qualification withdrawal dates added for: <i>(see page 21)</i> 'AIM Qualifications Level 2 Extended Certificate in Personal and Social Development Skills (603/1525/8)' AIM Qualifications Level 2 Diploma in Personal and Social Development Skills (603/1526/X)</p> <p>- Qualification review dates extended for: <i>(see pages 8)</i> AIM Qualifications Entry Level 1 Award in Personal and Social Development Skills (603/1502/7) AIM Qualifications Entry Level 1 Extended Award in Personal and Social Development Skills (603/1503/9) AIM Qualifications Entry Level 1 Certificate in Personal and Social Development Skills (603/1504/0) AIM Qualifications Entry Level 1 Extended Certificate in Personal and Social Development Skills (603/1505/2) AIM Qualifications Entry Level 1 Diploma in Personal and Social Development Skills (603/1506/4)</p> <p>AIM Qualifications Entry Level 2 Award in Personal and Social Development Skills (603/1507/6) AIM Qualifications Entry Level 2 Extended Award in Personal and Social Development Skills (603/1508/8) AIM Qualifications Entry Level 2 Certificate in Personal and Social Development Skills (603/1509/X) AIM Qualifications Entry Level 2 Extended Certificate in Personal and Social Development Skills (603/1510/6) AIM Qualifications Entry Level 2 Diploma in Personal and Social Development Skills (603/1511/8)</p> <p>AIM Qualifications Entry Level 3 Award in Personal and Social Development Skills (603/1512/X) AIM Qualifications Entry Level 3 Extended Award in Personal and Social Development Skills (603/1513/1) AIM Qualifications Entry Level 3 Certificate in Personal and Social Development Skills (603/1514/3) AIM Qualifications Entry Level 3 Extended Certificate in Personal and Social Development Skills (603/1515/5) AIM Qualifications Entry Level 3 Diploma in Personal and Social Development Skills (603/1516/7)</p>

Version Number	Date	Description
8	January 2022	<p>- Qualification review dates extended for: <i>(see pages 8)</i> AIM Qualifications Level 1 Award in Personal and Social Development Skills (603/1517/9) AIM Qualifications Level 1 Extended Award in Personal and Social Development Skills (603/1518/0) AIM Qualifications Level 1 Certificate in Personal and Social Development Skills (603/1519/2) AIM Qualifications Level 1 Extended Certificate in Personal and Social Development Skills (603/1520/9) AIM Qualifications Level 1 Diploma in Personal and Social Development Skills (603/1521/0)</p> <p>AIM Qualifications Level 2 Award in Personal and Social Development Skills (603/1522/2) AIM Qualifications Level 2 Extended Award in Personal and Social Development Skills (603/1523/4) AIM Qualifications Level 2 Certificate in Personal and Social Development Skills (603/1524/6)</p>
9	March 2022	<p>- An optional MCQ assessment method has been added to the following components: Building Confidence and Self Esteem (A/616/0360) and Interpersonal Skills (M/616/4793)</p>



Contents

Introduction	7
SECTION ONE - QUALIFICATION OVERVIEW	
About these Qualifications	10
SECTION TWO - QUALIFICATION STRUCTURE	
Qualification Structure	17
Components	23
SECTION THREE - ASSESSMENT	
Centre Staff Requirements	72
How these Qualifications are Assessed	73
Entry 1 Achievement Continuum	73
SECTION FOUR - OPERATIONAL GUIDANCE	
Offering these Qualifications	75
Approval to Offer these Qualifications	75
Registration and Certification	75
SECTION FIVE - APPENDICES	
A Guide to Assessing AIM Qualifications	78
Entry 1 Achievement Continuum	78
Entry 1 Learner Transcript Template	78
Guidance for using Entry 1 Assessment Continuum and Exemplar Learner Transcripts	78



Introduction

Welcome to the AIM Qualifications Suite of Personal and Social Development Skills Qualification Handbook.

AIM Qualifications Entry Level 1 Award in Personal and Social Development Skills 603/1502/7

AIM Qualifications Entry Level 1 Extended Award in Personal and Social Development Skills 603/1503/9

AIM Qualifications Entry Level 1 Certificate in Personal and Social Development Skills 603/1504/0

AIM Qualifications Entry Level 1 Extended Certificate in Personal and Social Development Skills 603/1505/2

AIM Qualifications Entry Level 1 Diploma in Personal and Social Development Skills 603/1506/4

AIM Qualifications Entry Level 2 Award in Personal and Social Development Skills 603/1507/6

AIM Qualifications Entry Level 2 Extended Award in Personal and Social Development Skills 603/1508/8

AIM Qualifications Entry Level 2 Certificate in Personal and Social Development Skills 603/1509/X

AIM Qualifications Entry Level 2 Extended Certificate in Personal and Social Development Skills 603/1510/6

AIM Qualifications Entry Level 2 Diploma in Personal and Social Development Skills 603/1511/8

AIM Qualifications Entry Level 3 Award in Personal and Social Development Skills 603/1512/X

AIM Qualifications Entry Level 3 Extended Award in Personal and Social Development Skills 603/1513/1

AIM Qualifications Entry Level 3 Certificate in Personal and Social Development Skills 603/1514/3

AIM Qualifications Entry Level 3 Extended Certificate in Personal and Social Development Skills 603/1515/5

AIM Qualifications Entry Level 3 Diploma in Personal and Social Development Skills 603/1516/7

AIM Qualifications Level 1 Award in Personal and Social Development Skills 603/1517/9

AIM Qualifications Level 1 Extended Award in Personal and Social Development Skills 603/1518/0

AIM Qualifications Level 1 Certificate in Personal and Social Development Skills 603/1519/2

AIM Qualifications Level 1 Extended Certificate in Personal and Social Development Skills 603/1520/9

AIM Qualifications Level 1 Diploma in Personal and Social Development Skills 603/1521/0

AIM Qualifications Level 2 Award in Personal and Social Development Skills 603/1522/2

AIM Qualifications Level 2 Extended Award in Personal and Social Development Skills 603/1523/4

AIM Qualifications Level 2 Certificate in Personal and Social Development Skills 603/1524/6

AIM Qualifications Level 2 Extended Certificate in Personal and Social Development Skills 603/1525/8

AIM Qualifications Level 2 Diploma in Personal and Social Development Skills 603/1526/X

This Handbook contains everything you need to know about these qualifications and is intended for Tutors, Assessors, Internal Verifiers and other staff involved with the planning, delivery and assessment.

This is a live document and as such will be updated when required. You will be informed via email when changes are made and it is your responsibility to ensure the most up-to-date version of the Qualification Handbook is in use.

About Us

AIM is a national and international Awarding Organisation. We offer a large number of regulated qualifications at different levels and in a wide range of subject areas, Access to Higher Education Diplomas and End Point Assessments.

Our products are flexible enough to be delivered in a range of settings, from small providers to large colleges and in the workplace both nationally and internationally.

We pride ourselves on offering the best possible customer service, and are always on hand to help if you have any questions. Our organisational structure and business processes enable us to be able to respond quickly to the needs of customers to develop new products that meet their specific needs.

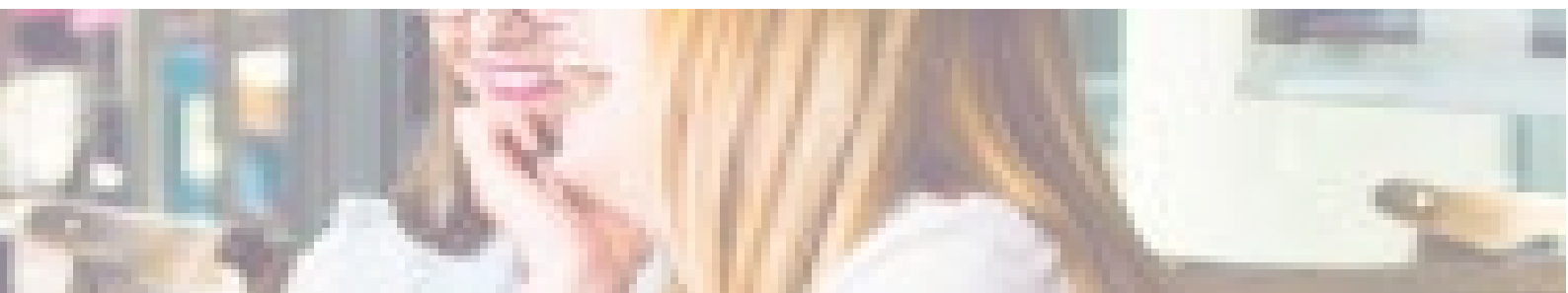


Section One

Qualification Overview

[Back to Contents](#)

9



About these Qualifications

The AIM Qualifications Suite of Personal and Social Development Skills Qualifications are designed to help learners develop skills and knowledge in personal and social skills. The qualifications will support learners to become confident individuals who are physically, emotionally and socially healthy, be responsible citizens who make a positive contribution to society and embrace change and managing risk together with their own well-being.

These qualifications also allow learners to develop knowledge in areas around study, mathematics, literacy and science, appropriate for use by mainstream establishments for students aged 14-19, and for adults.

These qualifications also play a major role in rewarding achievement within the non-formal sector.

Qualification Features

- Available from Entry 1 – Level 2
- Flexible progression opportunities available
- Retained popular features from QCF favourites, for example credit-based accumulation and transferable components across the different sizes of qualifications
- Literacy, numeracy and ICT components available
- Use of the Entry 1 Achievement Continuum for components and qualifications at Entry 1
- A wide range of assessment methods available to suit the individual learner



Entry 1 Qualifications

	AIM Qualifications Entry 1 Award in Personal and Social Development Skills	AIM Qualifications Entry 1 Extended Award in Personal and Social Development Skills	AIM Qualifications Entry 1 Certificate in Personal and Social Development Skills	AIM Qualifications Entry 1 Extended Certificate in Personal and Social Development Skills	AIM Qualifications Entry 1 Diploma in Personal and Social Development Skills
Qualification Family	Flexibilities				
Grading	Pass/Fail				
Geographical Coverage	England, Wales				
Operational Start Date	1st October 2017				
Review Date	31st December 2023				
Sector	14.1 - Foundations for Learning and Life				
Qualification Number	603/1502/7	603/1503/9	603/1504/0	603/1505/2	603/1506/4
Learning Aim Reference	60315027	60315039	60315040	60315052	60315064
Guided Learning Hours	30	90	150	270	370
Total Qualification Time	30	90	150	270	370
Total Credits Required	3	9	15	27	37
Minimum Learner Age	N/A	N/A	N/A	N/A	N/A

Entry 2 Qualifications

	AIM Qualifications Entry 2 Award in Personal and Social Development Skills	AIM Qualifications Entry 2 Extended Award in Personal and Social Development Skills	AIM Qualifications Entry 2 Certificate in Personal and Social Development Skills	AIM Qualifications Entry 2 Extended Certificate in Personal and Social Development Skills	AIM Qualifications Entry 2 Diploma in Personal and Social Development Skills
Qualification Family	Flexibilities				
Grading	Pass/Fail				
Geographical Coverage	England, Wales				
Operational Start Date	1st October 2017				
Review Date	31st December 2023				
Sector	14.1 - Foundations for Learning and Life				
Qualification Number	603/1507/6	603/1508/8	603/1509/X	603/1510/6	603/1511/8
Learning Aim Reference	60315076	60315088	6031509X	60315106	60315118
Guided Learning Hours	30	90	150	270	370
Total Qualification Time	30	90	150	270	370
Total Credits Required	3	9	15	27	37
Minimum Learner Age	N/A	N/A	N/A	N/A	N/A

Entry 3 Qualifications

	AIM Qualifications Entry 3 Award in Personal and Social Development Skills	AIM Qualifications Entry 3 Extended Award in Personal and Social Development Skills	AIM Qualifications Entry 3 Certificate in Personal and Social Development Skills	AIM Qualifications Entry 3 Extended Certificate in Personal and Social Development Skills	AIM Qualifications Entry 3 Diploma in Personal and Social Development Skills
Qualification Family	Flexibilities				
Grading	Pass/Fail				
Geographical Coverage	England, Wales				
Operational Start Date	1st October 2017				
Review Date	31st December 2023				
Sector	14.1 - Foundations for Learning and Life				
Qualification Number	603/1512/X	603/1513/1	603/1514/3	603/1515/5	603/1516/7
Learning Aim Reference	6031512X	60315131	60315143	60315155	60315167
Guided Learning Hours	30	90	150	270	370
Total Qualification Time	30	90	150	270	370
Total Credits Required	3	9	15	27	37
Minimum Learner Age	N/A	N/A	N/A	N/A	N/A

Level 1 Qualifications

	AIM Qualifications Level 1 Award in Personal and Social Development Skills	AIM Qualifications Level 1 Extended Award in Personal and Social Development Skills	AIM Qualifications Level 1 Certificate in Personal and Social Development Skills	AIM Qualifications Level 1 Extended Certificate in Personal and Social Development Skills	AIM Qualifications Level 1 Diploma in Personal and Social Development Skills
Qualification Family	Flexibilities				
Grading	Pass/Fail				
Geographical Coverage	England, Wales				
Operational Start Date	1st October 2017				
Review Date	31st December 2023				
Sector	14.1 - Foundations for Learning and Life				
Qualification Number	603/1517/9	603/1518/0	603/1519/2	603/1520/9	603/1521/0
Learning Aim Reference	60315179	60315180	60315192	60315209	60315210
Guided Learning Hours	54	78	130	233	321
Total Qualification Time	60	87	146	261	360
Total Credits Required	6	9	15	26	36
Minimum Learner Age	N/A	N/A	N/A	N/A	N/A

Level 2 Qualifications

	AIM Qualifications Level 2 Award in Personal and Social Development Skills	AIM Qualifications Level 2 Extended Award in Personal and Social Development Skills	AIM Qualifications Level 2 Certificate in Personal and Social Development Skills	AIM Qualifications Level 2 Extended Certificate in Personal and Social Development Skills	AIM Qualifications Level 2 Diploma in Personal and Social Development Skills
Qualification Family	Flexibilities				
Grading	Pass/Fail				
Geographical Coverage	England, Wales				
Operational Start Date	1st October 2017				
Review Date	Level 2 Award 31st December 2023 Level 2 Extended Award - 31st December 2023 Level 2 Certificate - 31st December 2023				
Last Registration Date	Level 2 Extended Certificate - 31st July 2022 Level 2 Diploma - 31st July 2022				
Last Certification Date	Level 2 Extended Certificate - 31st July 2025 Level 2 Diploma - 31st July 2025				
Sector	14.1 - Foundations for Learning and Life				
Qualification Number	603/1522/2	603/1523/4	603/1524/6	603/1525/8	603/1526/X
Learning Aim Reference	60315222	60315234	60315246	60315258	6031526X
Guided Learning Hours	48	69	115	206	293
Total Qualification Time	78	112	187	336	478
Total Credits Required	8	11	19	34	48
Minimum Learner Age	N/A	N/A	N/A	N/A	N/A

Total Qualification Time and Guided Learning Hours

Total Qualification Time (TQT) is the number of notional hours it takes a typical learner to achieve the full qualification and is made up of two elements:

- the minimum number of Qualification Guided Learning Hours (GLH) - the number of Tutor-led contact hours
- the number of hours spent on preparation, studying and the assessment that is non-guided

For example, the number of tutor-led contact hours (GLH) for a qualification is 30 and the number of hours spent by the learner (non-GLH) on preparation, studying and the assessment is 6 hours. Therefore the Total Qualification Time (TQT) for the qualification is 36 hours.

Progression Opportunities

These qualifications have been designed to support learners to build on their knowledge and skills. Learners may progress onto higher level qualifications or into employment.

Entry Guidance

There are no entry requirements for these qualifications.

Qualification Dates

The qualification review date is the date by which we will have carried out a review of the qualification. We work with sector representatives to make any changes necessary to meet sector needs and to reflect recent developments. In most cases, we'll extend the qualification and set a new review date. If we make a decision to withdraw a qualification, we'll set an operational end date.

We will post information relating to changes or extensions to qualifications on our website and centres approved to offer the qualification will be kept updated. The certification end date will be three years from the operational end date.

Resource Requirements

You must ensure that your centre has appropriate resources in place to deliver the components in these qualifications. If your centre uses the online Multiple Choice Question (MCQ) assessment method, they must ensure they have the appropriate resources in place to deliver the externally set, invigilated assessment. Further information on our requirements can be found in Section 3: Assessment.



Section Two

Qualification Structure and Components



Qualification Structure: Entry 1 Qualifications (Components with the same title at different levels are barred against each other)

	AIM Qualifications Entry 1 Award in Personal and Social Development Skills	AIM Qualifications Entry 1 Extended Award in Personal and Social Development Skills	AIM Qualifications Entry 1 Certificate in Personal and Social Development Skills	AIM Qualifications Entry 1 Extended Certificate in Personal and Social Development Skills	AIM Qualifications Entry 1 Diploma in Personal and Social Development Skills
Total Credits Required	3	9	15	27	37

Full Description of Rules of Combination	<i>Learners must achieve a minimum of 3 credits from any combination of components at Entry 1 only.</i>	<i>Learners must achieve a minimum of 9 credits from any combination of components. A maximum of 3 credits may be achieved at Entry 2. Components with the same title at different levels are barred against each other</i>	<i>Learners must achieve a minimum of 15 credits from any combination of components. A maximum of 5 credits may be achieved at Entry 2. Components with the same title at different levels are barred against each other</i>	<i>Learners must achieve a minimum of 27 credits from any combination of components. A maximum of 10 credits may be achieved at Entry 2. Components with the same title at different levels are barred against each other</i>	<i>Learners must achieve a minimum of 37 credits from any combination of components. A maximum of 12 credits may be achieved at Entry 2. Components with the same title at different levels are barred against each other</i>
--	---	---	--	---	---

Qualification Structure: Entry 2 Qualifications (Components with the same title at different levels are barred against each other)

	AIM Qualifications Entry 2 Award in Personal and Social Development Skills	AIM Qualifications Entry 2 Extended Award in Personal and Social Development Skills	AIM Qualifications Entry 2 Certificate in Personal and Social Development Skills	AIM Qualifications Entry 2 Extended Certificate in Personal and Social Development Skills	AIM Qualifications Entry 2 Diploma in Personal and Social Development Skills
Total Credits Required	3	9	15	27	37

Full Description of Rules of Combination	<i>Learners must achieve a minimum of 3 credits from any combination of components at Entry 2 only.</i>	<i>Learners must achieve a minimum of 9 credits from any combination of components. A maximum of 3 credits may be achieved at Entry 1 and/or Entry 3. Components with the same title at different levels are barred against each other.</i>	<i>Learners must achieve a minimum of 15 credits from any combination of components. A maximum of 5 credits may be achieved at Entry 1 and/or Entry 3. Components with the same title at different levels are barred against each other.</i>	<i>Learners must achieve a minimum of 27 credits from any combination of components. A maximum of 10 credits may be achieved at Entry 1 and/or Entry 3. Components with the same title at different levels are barred against each other.</i>	<i>Learners must achieve a minimum of 37 credits from any combination of components. A maximum of 12 credits may be achieved at Entry 1 and/or Entry 3. Components with the same title at different levels are barred against each other.</i>
--	---	---	--	---	---

Qualification Structure: Entry 3 Qualifications (Components with the same title at different levels are barred against each other)

	AIM Qualifications Entry 3 Award in Personal and Social Development Skills	AIM Qualifications Entry 3 Extended Award in Personal and Social Development Skills	AIM Qualifications Entry 3 Certificate in Personal and Social Development Skills	AIM Qualifications Entry 3 Extended Certificate in Personal and Social Development Skills	AIM Qualifications Entry 3 Diploma in Personal and Social Development Skills
Total Credits Required	3	9	15	27	37

Full Description of Rules of Combination	<i>Learners must achieve a minimum of 3 credits from any combination of components at Entry 3 only.</i>	<i>Learners must achieve a minimum of 9 credits from any combination of components. A maximum of 3 credits may be achieved at Entry 2 and/or Level 1. Components with the same title at different levels are barred against each other.</i>	<i>Learners must achieve a minimum of 15 credits from any combination of components. A maximum of 5 credits may be achieved at Entry 2 and/or Level 1. Components with the same title at different levels are barred against each other.</i>	<i>Learners must achieve a minimum of 27 credits from any combination of components. A maximum of 10 credits may be achieved at Entry 2 and/or Level 1. Components with the same title at different levels are barred against each other.</i>	<i>Learners must achieve a minimum of 37 credits from any combination of components. A maximum of 12 credits may be achieved at Entry 2 and/or Level 1. Components with the same title at different levels are barred against each other.</i>

Qualification Structure: Level 1 Qualifications (Components with the same title at different levels are barred against each other)

	AIM Qualifications Level 1 Award in Personal and Social Development Skills	AIM Qualifications Level 1 Extended Award in Personal and Social Development Skills	AIM Qualifications Level 1 Certificate in Personal and Social Development Skills	AIM Qualifications Level 1 Extended Certificate in Personal and Social Development Skills	AIM Qualifications Level 1 Diploma in Personal and Social Development Skills
Total Credits Required	6	9	15	26	36

Full Description of Rules of Combination	<i>Learners must achieve a minimum of 6 credits from any combination of components at Level 1 only.</i>	<i>Learners must achieve a minimum of 9 credits from any combination of components. A maximum of 3 credits may be achieved at Entry 3 and/or Level 2. Components with the same title at different levels are barred against each other.</i>	<i>Learners must achieve a minimum of 15 credits from any combination of components. A maximum of 5 credits may be achieved at Entry 3 and/or Level 2. Components with the same title at different levels are barred against each other.</i>	<i>Learners must achieve a minimum of 26 credits from any combination of components. A maximum of 10 credits may be achieved at Entry 3 and/or Level 2. Components with the same title at different levels are barred against each other.</i>	<i>Learners must achieve a minimum of 36 credits from any combination of components. A maximum of 12 credits may be achieved at Entry 3 and/or Level 2. Components with the same title at different levels are barred against each other.</i>

Qualification Structure: Level 2 Qualifications *(Components with the same title at different levels are barred against each other)*

	AIM Qualifications Level 2 Award in Personal and Social Development Skills	AIM Qualifications Level 2 Extended Award in Personal and Social Development Skills	AIM Qualifications Level 2 Certificate in Personal and Social Development Skills	AIM Qualifications Level 2 Extended Certificate in Personal and Social Development Skills	AIM Qualifications Level 2 Diploma in Personal and Social Development Skills
Total Credits Required	8	11	19	34	48

Full Description of Rules of Combination	<i>Learners must achieve a minimum of 8 credits from any combination of components at Level 2 only.</i>	<i>Learners must achieve a minimum of 11 credits from any combination of components. A maximum of 4 credits may be achieved at Level 1 and/or Level 3. Components with the same title at different levels are barred against each other.</i>	<i>Learners must achieve a minimum of 19 credits from any combination of components. A maximum of 6 credits may be achieved at Level 1 and/or Level 3. Components with the same title at different levels are barred against each other.</i>	<i>Learners must achieve a minimum of 34 credits from any combination of components. A maximum of 11 credits may be achieved at Level 1 and/or Level 3. Components with the same title at different levels are barred against each other.</i>	<i>Learners must achieve a minimum of 48 credits from any combination of components. A maximum of 15 credits may be achieved at Level 1 and/or Level 3. Components with the same title at different levels are barred against each other.</i>
--	---	--	--	---	---

Components

Please refer to Section 2 for the rules of combinations for the specific qualification sizes and levels. Components with the same title at different levels are barred against each other. The full list of components for these qualifications are displayed in the following topics:

Academic Studies

Becoming Independent

Citizenship

Healthy Living

Helping Others

ICT

Literacy

Mathematics

Personal Development

Relationships

Study Skills



Components

Academic Studies					Assessment set by the centre			Assessment set by AIM		
Component Code	Component Title	Level	Credit Value	GLH	Portfolio of evidence	Exam	Practical	Portfolio of evidence	Exam	Practical
K/616/5019	Atomic Structure	One	2	16	✓	–	–	–	–	–
K/617/0995	Atomic Structure	Two	3	16	✓	–	–	–	–	–
H/616/4693	Basic Science Skills	E3	3	30	✓	–	✓	–	–	–
A/616/4831	Biology – Human Reproduction	One	3	27	✓	–	–	–	–	–
J/616/4380	Cells and Cell Function	One	3	27	✓	–	–	–	–	–
K/617/1001	Cells and Cell Function	Two	4	24	✓	–	–	–	–	–
M/617/0965	Chemical Products used in the Home	E1	1	10	✓	–	–	–	–	–
T/617/0966	Chemical Products used in the Home	E2	1	10	✓	–	–	–	–	–
A/617/0967	Chemical Products used in the Home	E3	3	30	✓	–	–	–	–	–
K/616/4694	Chemical Reactions	E3	3	30	✓	–	–	–	–	–
D/616/4384	Chemical Reactions	One	2	18	✓	–	–	–	–	–
M/617/1002	Chemical Reactions	Two	3	16	✓	–	–	–	–	–
T/617/1003	Chemistry: Structure and Changes	Two	4	24	✓	–	–	–	–	–
F/617/1005	Cognitive Psychology: Memory	Two	4	24	✓	–	–	–	–	–
L/617/1007	Contextual Studies – The Early Twentieth Century	Two	4	24	✓	–	–	–	–	–

[Back to Contents](#)

Academic Studies					Assessment set by the centre			Assessment set by AIM		
Component Code	Component Title	Level	Credit Value	GLH	Portfolio of evidence	Exam	Practical	Portfolio of evidence	Exam	Practical
A/616/4697	Creating Cosmetics using Science	E3	3	30	✓	–	✓	–	–	–
R/616/4396	Crime and Punishment through the Ages	E3	3	30	✓	–	–	–	–	–
H/616/4399	Criminal and Youth Justice	E3	3	30	✓	–	–	–	–	–
L/616/4400	Criminal and Youth Justice	One	3	27	✓	–	–	–	–	–
R/617/1008	Criminal and Youth Justice	Two	4	24	✓	–	–	–	–	–
Y/617/1012	Development of Social Policy	Two	4	24	✓	–	–	–	–	–
F/617/1019	Ecology	Two	4	24	✓	–	–	–	–	–
F/616/4443	Ecosystems	E3	3	30	✓	–	✓	–	–	–
J/616/4444	Electricity	E3	3	30	✓	–	✓	–	–	–
F/617/0968	Energy in the Home	E1	1	10	✓	–	–	–	–	–
J/617/0969	Energy in the Home	E2	2	20	✓	–	–	–	–	–
M/616/5037	Environmental Awareness	E1	2	20	✓	–	–	–	–	–
A/617/1021	Environmental Conservation	Two	4	24	✓	–	–	–	–	–
Y/616/5999	Environmental Improvement	E3	3	30	✓	–	–	–	–	–

[Back to Contents](#)

Academic Studies					Assessment set by the centre			Assessment set by AIM		
Component Code	Component Title	Level	Credit Value	GLH	Portfolio of evidence	Exam	Practical	Portfolio of evidence	Exam	Practical
T/616/5038	Environmental Issues	E2	2	20	✓	–	–	–	–	–
A/616/5039	Environmental Pollution	Two	8	48	✓	–	–	–	–	–
Y/616/5047	Environmental Study	One	3	27	✓	–	✓	–	–	–
Y/616/5050	Environmental Sustainability	One	2	18	✓	–	–	–	✓	–
F/617/1022	Environmental Conservation	Two	4	24	✓	–	–	–	–	–
J/617/1023	Ethical Issues in Social Policy	Two	4	24	✓	–	–	–	–	–
T/616/5492	Forensic Science	E3	3	30	✓	–	✓	–	–	–
K/617/1029	Geographical Fieldwork	Two	8	48	✓	–	–	–	–	–
J/616/5495	Geography – Map Skills	One	1	9	✓	–	✓	–	–	–
T/616/5489	Geology: Rocks Types and Formation Processes	E3	3	30	✓	–	✓	–	–	–
K/616/4758	Health and Safety in a Science Laboratory	E3	3	30	✓	–	✓	–	–	–
T/617/1034	Health Psychology	Two	4	24	✓	–	–	–	–	–
T/616/4780	How the Body Works	One	3	27	✓	–	–	–	–	–
L/617/1038	Human Health and Disease	Two	4	24	✓	–	–	–	–	–
R/617/1039	Human Life Processes	Two	3	16	✓	–	–	–	–	–
J/617/1040	Human Physiology	Two	8	48	✓	–	–	–	–	–

[Back to Contents](#)

Academic Studies					Assessment set by the centre			Assessment set by AIM		
Component Code	Component Title	Level	Credit Value	GLH	Portfolio of evidence	Exam	Practical	Portfolio of evidence	Exam	Practical
K/616/4792	International Current Affairs	One	3	27	✓	–	–	–	–	–
D/617/1044	Introduction to History	Two	4	24	✓	–	–	–	–	–
K/617/1046	Introduction to Sociology	Two	4	24	✓	–	–	–	–	–
T/617/1048	Introduction to the Law of Tort	Two	4	24	✓	–	–	–	–	–
A/617/1049	Introduction to Western Philosophy: Analysis	Two	8	48	✓	–	–	–	–	–
F/616/4801	Investigating Atoms	E3	3	30	✓	–	–	–	–	–
A/616/4800	Investigating Architecture	E3	3	30	✓	–	✓	–	–	–
L/617/1055	Legal Literature	Two	3	16	✓	–	–	–	–	–
A/616/4814	Living Things	One	3	27	✓	–	–	–	–	–
H/617/1059	Living Things	Two	4	24	✓	–	–	–	–	–
J/616/4816	Local History – The Development of the City: 1700 – 2000	One	3	27	✓	–	–	–	–	–
A/617/0970	Making Useful Compounds	E1	2	20	✓	–	✓	–	–	–
F/617/0971	Making Useful Compounds	E2	2	20	✓	–	✓	–	–	–
J/617/0972	Making Useful Compounds	E3	3	30	✓	–	✓	–	–	–
M/617/1064	Organise an Event	Three	5	28	✓	–	✓	–	–	–

[Back to Contents](#)

Academic Studies					Assessment set by the centre			Assessment set by AIM		
Component Code	Component Title	Level	Credit Value	GLH	Portfolio of evidence	Exam	Practical	Portfolio of evidence	Exam	Practical
R/617/1073	Physics: Physical Processes	Two	4	24	✓	–	–	–	–	–
Y/617/1074	Planning and Promoting an Event	Two	4	24	✓	–	–	–	–	–
D/617/1075	Population Change and Aid	Two	4	24	✓	–	–	–	–	–
Y/616/5081	Reading and Writing in a Foreign Language	E3	3	30	✓	–	✓	–	–	–
L/617/0973	Renewable Energy	E1	1	10	✓	–	–	–	–	–
R/617/0974	Renewable Energy	E2	2	20	✓	–	–	–	–	–
Y/617/0975	Renewable Energy	E3	3	30	✓	–	–	–	–	–
M/617/1081	Research Methods in Sociology	Two	4	24	✓	–	–	–	–	–
H/616/5178	Science and Food	E3	3	30	✓	–	–	–	–	–
D/617/0976	Science and Our Universe	E1	1	10	✓	–	–	–	–	–
H/617/0977	Science and Our Universe	E2	2	20	✓	–	–	–	–	–
H/616/5181	Science and Our Universe	E3	3	30	✓	–	–	–	–	–
J/616/5206	Science and the Human Body	E3	3	30	✓	–	–	–	–	–
T/616/5508	Science and the Plant World	E3	3	30	✓	–	–	–	–	–
A/616/5509	Science in Fire Safety	E3	3	30	✓	–	–	–	–	–

Academic Studies					Assessment set by the centre			Assessment set by AIM		
Component Code	Component Title	Level	Credit Value	GLH	Portfolio of evidence	Exam	Practical	Portfolio of evidence	Exam	Practical
K/617/0978	Science: Health and Safety	E1	2	20	✓	–	✓	–	–	–
M/617/0979	Science: Health and Safety	E2	2	20	✓	–	✓	–	–	–
H/617/0980	Science: Health and Safety	E3	3	30	✓	–	✓	–	–	–
T/617/1082	Science: Practical Investigation	Two	3	16	✓	–	✓	–	–	–
J/617/1085	Skeleton and Muscles	Two	4	24	✓	–	–	–	–	–
M/617/1260	Social History Comparison of Given Periods	One	3	27	✓	–	–	–	✓	–
L/617/1086	Social Psychology	Two	4	24	✓	–	–	–	–	–
D/617/1092	The Cardiovascular System	Two	4	24	✓	–	–	–	–	–
H/617/1093	The Cold War 1945 – 89	Two	8	48	✓	–	–	–	–	–
K/617/1094	The English Legal System	Two	4	24	✓	–	–	–	–	–
K/616/5523	The Investigative Process, Principles and Practical Skills	One	3	27	✓	–	✓	–	–	–
M/617/1095	The Investigative Process, Principles and Practical Skills	Two	4	24	✓	–	✓	–	–	–
A/617/1097	The Origins and History of Terrorism	Two	8	48	✓	–	–	–	–	–
J/616/5531	The Science of Light and Sound	E3	3	30	✓	–	✓	–	–	–
J/617/1099	The Sociology of Health	Two	4	24	✓	–	–	–	–	–
L/616/5532	Understanding Biology	One	2	18	✓	–	✓	–	–	–
Y/616/5615	Understanding Ecology and Conservation	One	3	27	✓	–	–	–	–	–

Academic Studies					Assessment set by the centre			Assessment set by AIM		
Component Code	Component Title	Level	Credit Value	GLH	Portfolio of evidence	Exam	Practical	Portfolio of evidence	Exam	Practical
M/617/1100	Understanding Ecology and Conservation	Two	8	48	✓	–	–	–	–	–
K/617/0981	Variation and Adaptation in the Environment	E2	2	20	✓	–	–	–	–	–
Y/616/5534	Variation and Adaptation in the Environment	E3	3	30	✓	–	–	–	–	–
H/616/5536	Volcanoes and Earthquakes	E3	4	40	✓	–	–	–	–	–
M/617/0982	Working with Electrical Circuits	E1	2	20	✓	–	✓	–	–	–
T/617/0983	Working with Electrical Circuits	E2	2	20	✓	–	✓	–	–	–
A/617/0984	Working with Electrical Circuits	E3	3	30	✓	–	✓	–	–	–

Becoming Independent					Assessment set by the centre			Assessment set by AIM		
Component Code	Component Title	Level	Credit Value	GLH	Portfolio of evidence	Exam	Practical	Portfolio of evidence	Exam	Practical
J/616/0331	Accessing Commercial Services	E1	3	30	✓	–	✓	–	–	–
L/616/0332	Accessing Commercial Services	E2	3	30	✓	–	✓	–	–	–
R/616/0333	Accessing Commercial Services	E3	3	30	✓	–	✓	–	–	–
Y/616/0334	Accessing Financial Services	E1	3	30	✓	–	✓	–	–	–
D/616/0335	Accessing Financial Services	E2	3	30	✓	–	✓	–	–	–
H/616/0336	Accessing Financial Services	E3	3	30	✓	–	✓	–	–	–
Y/616/4366	Banking and other Financial Organisations	One	1	9	✓	–	–	–	–	–
K/616/4372	Being a Critical Consumer	E3	2	20	✓	–	✓	–	–	–
M/616/4373	Being a Critical Consumer	One	2	18	✓	–	✓	–	–	–
F/617/0999	Being a Critical Consumer	Two	3	16	✓	–	✓	–	–	–
J/616/4377	Budgeting	E3	1	10	✓	–	–	–	–	–
L/616/4378	Budgeting	One	1	9	✓	–	–	–	–	–
K/616/4386	Clean and Prepare a Cycle for Use	E3	1	10	✓	–	✓	–	–	–
M/616/4387	Cleaning	E1	3	30	✓	–	✓	–	–	–
D/616/5938	Cleaning	E2	3	30	✓	–	✓	–	–	–

Becoming Independent					Assessment set by the centre			Assessment set by AIM		
Component Code	Component Title	Level	Credit Value	GLH	Portfolio of evidence	Exam	Practical	Portfolio of evidence	Exam	Practical
T/616/4388	Cleaning	E3	3	30	✓	–	✓	–	–	–
L/617/1010	Debt Management	Two	3	16	✓	–	–	–	–	–
K/616/0452	Developing a Personal Learning Programme	One	3	27	✓	–	✓	–	–	–
M/616/4437	Domestic Cooking Skills	One	3	27	✓	–	✓	–	–	–
T/616/4438	Domestic Skills	E3	3	30	✓	–	✓	–	–	–
A/616/4439	Domestic Skills	One	3	27	✓	–	✓	–	–	–
L/616/4445	Energy Use	E3	3	30	✓	–	–	–	–	–
Y/616/4836	Expedition Skills	E3	3	30	✓	–	✓	–	–	–
F/616/5561	Financial Literacy: Budgeting and Money Management	One	1	9	✓	–	✓	–	–	–
R/616/4740	Gaining and Sustaining a Tenancy	One	4	36	✓	–	–	–	–	–
Y/616/4741	General Skills for Independent Living	E3	3	30	✓	–	–	–	–	–
L/616/5806	Getting About Safely	E1	3	30	✓	–	–	–	–	–
L/616/6003	Getting About Safely	E3	3	30	✓	–	–	–	–	–
M/616/5054	Hazards in Familiar Settings	E2	2	20	✓	–	–	–	–	–
A/616/4778	Home and Personal Safety Awareness	E3	3	30	✓	–	✓	–	–	–

[Back to Contents](#)

Becoming Independent					Assessment set by the centre			Assessment set by AIM		
Component Code	Component Title	Level	Credit Value	GLH	Portfolio of evidence	Exam	Practical	Portfolio of evidence	Exam	Practical
F/616/4779	Homelessness	One	1	9	✓	–	–	–	–	–
H/616/4841	Independent Living: Staying Overnight	E3	3	30	✓	–	✓	–	–	–
F/616/5060	Independent Living: Staying Overnight	One	3	27	✓	–	✓	–	–	–
D/616/4790	Independent Shopping for Household Items	One	3	27	✓	–	✓	–	–	–
A/616/4795	Introduction to Self-Employment	E3	3	30	✓	–	–	–	–	–
F/616/4796	Introduction to Self-Employment	One	3	27	✓	–	–	–	–	–
H/617/1045	Introduction to Self-Employment	Two	4	24	✓	–	–	–	–	–
M/616/4812	Living in the Community	E3	3	30	✓	–	–	–	–	–
H/616/6010	Living in the Community	One	3	27	✓	–	–	–	–	–
T/616/4813	Living Independently	One	3	27	✓	–	✓	–	–	–
L/616/4817	Looking After Clothes	E1	3	30	✓	–	✓	–	–	–
M/616/5068	Looking After Clothes	E2	3	30	✓	–	✓	–	–	–
R/616/4818	Looking After Clothes	E3	3	30	✓	–	✓	–	–	–

[Back to Contents](#)

Becoming Independent					Assessment set by the centre			Assessment set by AIM		
Component Code	Component Title	Level	Credit Value	GLH	Portfolio of evidence	Exam	Practical	Portfolio of evidence	Exam	Practical
T/616/5069	Maintaining a Wheeled Vehicle for Personal Use	One	2	18	✓	–	✓	–	–	–
F/616/4846	Managing Your Time	E2	2	20	✓	–	✓	–	–	–
F/616/1400	Money and Time	E1	3	30	✓	–	–	–	–	–
L/616/4865	Personal Finances	E3	3	30	✓	–	–	–	–	–
J/616/4864	Personal Finances	One	3	27	✓	–	–	–	✓	–
J/617/1068	Personal Finances	Two	4	24	✓	–	–	–	✓	–
H/616/5598	Personal Manner and Conduct	E2	2	20	✓	–	✓	–	–	–
R/616/6021	Personal Money Management	Two	1	8	✓	–	–	–	–	–
Y/616/5078	Personal Risk	One	1	9	✓	–	–	–	–	–
L/616/4879	Personal Risk	Two	1	8	✓	–	–	–	–	–
R/616/5807	Personal Safety	E1	3	30	✓	–	–	–	–	–
A/616/5820	Personal Safety	E2	3	30	✓	–	–	–	–	–
F/616/4880	Personal Safety	E3	3	30	✓	–	–	–	–	–
T/616/4889	Planning a Trip to a Visitor Attraction	One	2	18	✓	–	–	–	–	–
K/616/4890	Planning an Expedition	E3	3	30	✓	–	✓	–	–	–

[Back to Contents](#)

Becoming Independent					Assessment set by the centre			Assessment set by AIM		
Component Code	Component Title	Level	Credit Value	GLH	Portfolio of evidence	Exam	Practical	Portfolio of evidence	Exam	Practical
T/616/4892	Planning Journeys	E2	1	10	✓	–	✓	–	–	–
F/616/4894	Planning Walks	E3	2	20	✓	–	✓	–	–	–
H/616/5083	Recycling and Composting	One	1	9	✓	–	–	–	–	–
K/616/5084	Recycling Packaging Materials	E2	2	20	✓	–	✓	–	–	–
L/616/5093	Repair a Cycle Puncture	One	1	9	✓	–	✓	–	–	–
Y/616/5095	Replacing Cycle Brake Assemblies	One	2	18	✓	–	✓	–	–	–
D/616/5132	Responsible Road Vehicle Ownership and Use	One	2	18	✓	–	–	–	–	–
L/616/5143	Rights and Responsibilities	E2	2	20	✓	–	–	–	–	–
D/616/5146	Road Safety	E3	1	10	✓	–	–	–	–	–
L/616/5949	Routine Braking System Checks	E3	2	20	✓	–	✓	–	–	–
T/616/5153	Routine Motorcycle Checks	E3	1	10	✓	–	✓	–	–	–
F/616/5169	Routine Motorcycle Maintenance	One	3	27	✓	–	✓	–	–	–
J/616/5948	Routine Vehicle Checks	E3	2	20	✓	–	✓	–	–	–
T/616/5170	Safeguarding: Online and in Daily Life	One	6	54	✓	–	–	–	–	–

[Back to Contents](#)

Becoming Independent					Assessment set by the centre			Assessment set by AIM		
Component Code	Component Title	Level	Credit Value	GLH	Portfolio of evidence	Exam	Practical	Portfolio of evidence	Exam	Practical
Y/616/5601	Setting a Table at Home	E3	1	10	✓	–	✓	–	–	–
T/616/5945	Shopping for your Home	E3	3	30	✓	–	✓	–	–	–
L/616/6034	Skills for Shopping	E3	3	30	✓	–	✓	–	–	–
T/616/5590	Understanding Risk	One	1	9	✓	–	✓	–	–	–
L/616/5594	Understanding Risk	Two	1	8	✓	–	✓	–	–	–
A/616/5591	Using an Ordnance Survey Map	One	2	18	✓	–	✓	–	–	–
R/616/5595	Using Money	E1	3	30	✓	–	✓	–	–	–
K/616/5599	Using Money	E2	2	20	✓	–	✓	–	–	–
D/616/5602	Using Money	E3	2	20	✓	–	✓	–	–	–
Y/616/5596	Using Public Transport	E1	3	30	✓	–	✓	–	–	–
Y/506/7335	Using Public Transport – Buses and Trains	E3	3	30	✓	–	–	–	–	–
F/616/5592	Using Public Transport	One	3	27	✓	–	✓	–	–	–
R/616/5600	Using Public Transport – Buses and Trains	E2	3	30	✓	–	✓	–	–	–
D/616/5597	Using Taxis	E1	2	20	✓	–	✓	–	–	–

Becoming Independent					Assessment set by the centre			Assessment set by AIM		
Component Code	Component Title	Level	Credit Value	GLH	Portfolio of evidence	Exam	Practical	Portfolio of evidence	Exam	Practical
H/616/5603	Valeting a Car Interior	E3	1	10	✓	–	✓	–	–	–
K/616/5604	Washing a Car Exterior	E3	1	10	✓	–	✓	–	–	–
M/616/5605	Wax and Polish a Car Exterior	E3	1	10	✓	–	✓	–	–	–
T/616/5606	Young Parenthood	E3	2	20	✓	–	–	–	–	–
J/616/5593	Young Parenthood	One	2	18	✓	–	–	–	–	–

Citizenship					Assessment set by the centre			Assessment set by AIM		
Component Code	Component Title	Level	Credit Value	GLH	Portfolio of evidence	Exam	Practical	Portfolio of evidence	Exam	Practical
M/616/4356	Active Citizenship in the Local Community	Three	1	7	✓	–	–	–	–	–
D/616/5986	Citizenship	E3	3	30	✓	–	–	–	–	–
D/616/5941	Citizenship	One	3	27	✓	–	–	–	–	–
A/617/1004	Citizenship	Two	4	24	✓	–	–	–	–	–
F/616/4393	Contacting Your Local MP	One	1	9	✓	–	–	–	–	–
T/616/4696	Contributing to the Community	E2	4	40	✓	–	✓	–	–	–
A/616/5607	Disability Awareness	One	3	27	✓	–	–	–	–	–
H/617/1014	Disability, Society and the Law	Two	4	24	✓	–	–	–	–	–
L/616/4431	Diversity in Society	E1	2	20	✓	–	–	–	–	–
L/616/5028	Diversity in Society	E2	2	20	✓	–	–	–	–	–
R/616/4432	Diversity in Society	E3	3	30	✓	–	–	–	–	–
Y/616/4433	Diversity in Society	One	3	27	✓	–	–	–	✓	–
K/617/1015	Diversity in Society	Two	4	24	✓	–	–	–	✓	–
J/616/4430	Diversity and Faith	One	2	18	✓	–	–	–	–	–
T/617/1020	Economic Activity	Two	4	24	✓	–	–	–	–	–
R/617/1025	Faith Literacy	Two	8	48	✓	–	–	–	–	–

[Back to Contents](#)

Citizenship					Assessment set by the centre			Assessment set by AIM		
Component Code	Component Title	Level	Credit Value	GLH	Portfolio of evidence	Exam	Practical	Portfolio of evidence	Exam	Practical
F/616/4748	Hate Crime	E3	3	30	✓	–	–	–	–	–
A/616/4750	Hate Crime	One	3	27	✓	–	–	–	–	–
H/616/6007	Individual Rights and Responsibilities	E3	1	10	✓	–	–	–	–	–
K/616/6008	Individual Rights and Responsibilities	One	1	9	✓	–	–	–	–	–
H/616/4807	Law and Order	E1	2	20	✓	–	–	–	–	–
K/616/4808	Law and Order	E2	2	20	✓	–	–	–	–	–
Y/616/5064	Law and Order	E3	2	20	✓	–	–	–	–	–
K/616/5070	Making Laws – UK Parliament	One	2	18	✓	–	–	–	–	–
A/617/1066	Personal and Social Responsibility	Two	4	24	✓	–	–	–	–	–
A/616/5087	Religion and Our Society	One	3	27	✓	–	–	–	–	–
F/616/5091	Religion and the Media	E3	3	30	✓	–	–	–	–	–
J/616/5951	Rights and Responsibilities of Citizenship	E3	3	30	✓	–	–	–	–	–
F/616/5950	Rights and Responsibilities of Citizenship	One	3	27	✓	–	–	–	–	–
J/616/5609	The Local Community	E3	1	10	✓	–	–	–	–	–
F/616/5611	The Structure of Parliament	One	2	18	✓	–	–	–	–	–

[Back to Contents](#)

Citizenship

Assessment set by the centre

Assessment set by AIM

Component Code	Component Title	Level	Credit Value	GLH	<i>Portfolio of evidence</i>	<i>Exam</i>	<i>Practical</i>	<i>Portfolio of evidence</i>	<i>Exam</i>	<i>Practical</i>
L/616/5613	Understanding Cultural Differences	E3	3	30	✓	-	-	-	-	-
J/616/5612	Understanding Cultural Differences	One	3	27	✓	-	-	-	-	-
R/616/5614	Understanding Disability and Accessibility	One	3	27	✓	-	-	-	-	-
D/616/5616	Understanding the News	One	2	18	✓	-	-	-	-	-
A/617/1102	Understanding the News	Two	4	24	✓	-	-	-	-	-
H/616/5617	Valuing Equality and Diversity	One	2	18	✓	-	-	-	-	-
F/617/1103	Valuing Equality and Diversity	Two	3	16	✓	-	-	-	-	-
J/617/1104	Volunteering as an Appropriate Adult	Two	5	32	✓	-	-	-	-	-
M/616/5622	Voting in UK General Elections	One	2	18	✓	-	-	-	-	-

Healthy Living					Assessment set by the centre			Assessment set by AIM		
Component Code	Component Title	Level	Credit Value	GLH	Portfolio of evidence	Exam	Practical	Portfolio of evidence	Exam	Practical
A/616/4361	Alcohol Awareness	One	3	27	✓	-	-	-	✓	-
H/617/0994	Alcohol Awareness	Two	4	24	✓	-	-	-	✓	-
F/616/4362	Alcohol Misuse Awareness	E3	3	30	✓	-	-	-	-	-
L/616/4364	Archery	One	2	18	✓	-	✓	-	-	-
A/616/4375	Body Image	One	2	18	✓	-	-	-	-	-
H/617/1000	Body Image	Two	3	16	✓	-	-	-	-	-
K/616/4422	Developing a Personal Exercise Programme	One	6	54	✓	-	-	-	-	-
R/617/1011	Developing a Personal Exercise Programme	Two	8	48	✓	-	-	-	-	-
F/616/4426	Diet and Exercise	One	1	9	✓	-	-	-	-	-
J/616/4427	Diet and Nutrition	One	1	9	✓	-	-	-	-	-
D/617/1013	Diet and Nutrition	Two	3	16	✓	-	-	-	-	-
M/507/1276	Domestic Abuse and Mental Well-Being	Two	3	16	✓	-	-	-	-	-
M/616/4440	Drug and Alcohol Awareness	E1	2	20	✓	-	-	-	-	-
F/616/4698	Drug and Alcohol Awareness	E2	2	20	✓	-	-	-	-	-
T/616/5993	Drug Awareness	One	3	27	✓	-	-	-	✓	-
T/617/1017	Drug Awareness	Two	4	24	✓	✓	-	-	-	-
T/616/4441	Eating Disorders	One	1	9	✓	-	-	-	-	-

[Back to Contents](#)

Healthy Living					Assessment set by the centre			Assessment set by AIM		
Component Code	Component Title	Level	Credit Value	GLH	Portfolio of evidence	Exam	Practical	Portfolio of evidence	Exam	Practical
A/616/4442	Eating Disorders	Two	1	8	✓	-	-	-	-	-
R/616/4754	Health and Fitness	E1	3	30	✓	-	✓	-	-	-
D/616/4756	Health and Fitness	E2	3	30	✓	-	✓	-	-	-
H/616/4757	Health and Fitness	E3	3	30	✓	-	✓	-	-	-
K/616/4839	Health and Hygiene	E3	3	30	✓	-	-	-	-	-
D/616/4840	Health and Hygiene	One	3	27	✓	-	-	-	-	-
H/616/4760	Healthy Living	E3	3	30	✓	-	-	-	-	-
T/616/5055	Healthy Living	One	3	27	✓	-	-	-	✓	-
F/617/1036	Healthy Living	Two	4	24	✓	-	-	-	-	-
Y/616/4786	Hygiene Skills for Hands and Feet	E3	1	10	✓	-	✓	-	-	-
D/616/4787	Hygiene Skills for Oral Health	E3	1	10	✓	-	✓	-	-	-
H/616/4788	Improving own Fitness	E3	6	60	✓	-	-	-	-	-
J/616/4802	Issues of Substance Misuse	One	1	9	✓	-	-	-	-	-
L/616/4803	Issues of Substance Misuse	Two	1	8	✓	-	-	-	-	-
R/616/4804	Keeping Healthy: Smoking Awareness	E3	3	30	✓	-	-	-	-	-
Y/616/4805	Keeping Healthy: Smoking Awareness	One	3	27	✓	-	-	-	-	-
Y/616/4819	Maintaining Sexual Health	Two	1	8	✓	-	-	-	-	-

[Back to Contents](#)

Healthy Living					Assessment set by the centre			Assessment set by AIM		
Component Code	Component Title	Level	Credit Value	GLH	Portfolio of evidence	Exam	Practical	Portfolio of evidence	Exam	Practical
J/616/5691	Mountain Biking Skills	One	4	36	✓	–	✓	–	–	–
M/616/4860	Personal Care and Hygiene	E1	3	30	✓	–	–	–	–	–
T/616/4861	Personal Care and Hygiene	E2	3	30	✓	–	–	–	–	–
L/616/5076	Personal Health	E1	3	30	✓	–	–	–	–	–
D/616/4868	Personal Health	E2	3	30	✓	–	–	–	–	–
H/616/4869	Personal Health	E3	3	30	✓	–	–	–	–	–
Y/616/4870	Personal Hygiene	E3	1	10	✓	–	–	–	–	–
F/617/1070	Personal Physical Fitness	Two	4	24	✓	–	✓	–	–	–
J/617/1071	Plan and Cook for a Healthy Lifestyle	Two	4	24	✓	–	✓	–	–	–
K/616/4887	Planning a Healthy Diet	E3	2	20	✓	–	–	–	–	–
M/616/4888	Planning a Healthy Diet	One	3	27	✓	–	–	–	–	–
F/616/5625	Substance Misuse Awareness	E3	3	30	✓	–	–	–	–	–
J/616/5626	Taking Part in Exercise	One	3	27	✓	–	✓	–	–	–
A/616/5638	Taking Part in Sport	E3	3	30	✓	–	✓	–	–	–
R/616/5631	Taking Part in Sport	One	3	27	✓	–	✓	–	–	–
R/617/1087	Taking Part in Sport	Two	4	24	✓	–	✓	–	–	–
T/616/5640	Team Games	E3	3	30	✓	–	✓	–	–	–

[Back to Contents](#)

Helping Others					Assessment set by the centre					
Component Code	Component Title	Level	Credit Value	GLH	Portfolio of evidence	Exam	Practical	Portfolio of evidence	Exam	Practical
J/617/1121	Delivering a Training Session	Three	3	14	✓	–	✓	–	–	–
L/617/1024	Experiential Education: Planning	Three	3	14	✓	–	✓	–	–	–
A/616/4702	Experiential Education: Session Delivery	Two	1	8	✓	–	✓	–	–	–
K/616/4727	Family Learning	One	3	27	✓	–	–	–	–	–
D/617/1027	Family Learning	Two	4	24	✓	–	–	–	–	–
D/616/5065	Learner Representation Skills	One	3	27	✓	–	✓	–	–	–
T/617/1051	Learner Representation Skills	Two	4	24	✓	–	✓	–	–	–
F/617/1053	Learner Representation Skills	Three	5	28	✓	–	✓	–	–	–
H/617/1062	Mediation	Two	4	24	✓	–	–	–	–	–
R/616/0865	Mentoring	Two	1	8	✓	–	–	–	–	–
D/617/0055	Mentoring Practice	Two	3	16	✓	–	✓	–	–	–
Y/617/0992	Mobility and Orientation for Learners with Additional Needs	One	3	27	✓	–	✓	–	–	–
Y/616/4853	Peer Educator Skills	Two	1	8	✓	–	–	–	–	–
T/617/1065	Peer Led Education Work	Two	8	48	✓	–	✓	–	–	–

[Back to Contents](#)

HelpingOthers					Assessment set by the centre			Assessment set by AIM		
Component Code	Component Title	Level	Credit Value	GLH	Portfolio of evidence	Exam	Practical	Portfolio of evidence	Exam	Practical
H/616/4855	Peer Mediation	One	3	27	✓	–	–	–	–	–
K/616/4856	Peer Support Skills	One	2	18	✓	–	–	–	–	–
L/617/1122	Preparing a Training Session	Three	3	14	✓	–	–	–	–	–
T/617/1096	The Learning Support Role: Learning and Assessment	Two	8	48	✓	–	✓	–	–	–
H/617/0056	The Mentoring Process	Two	4	24	✓	–	–	–	–	–
L/616/5644	The Peer Mediation Process	One	3	27	✓	–	–	–	–	–
R/616/5645	The Role of Young People as Peer Mentors	One	3	27	✓	–	–	–	–	–
F/617/1098	The Roles and Responsibilities of a Peer Educator	Two	3	16	✓	–	–	–	–	–
Y/617/1107	Working with Disabled Learners: Disability Awareness	Three	4	21	✓	–	–	–	–	–
R/617/1106	Working with Disabled Learners: Note-taking Skills	Three	4	21	✓	–	–	–	–	–

ICT					Assessment set by the centre			Assessment set by AIM		
Component Code	Component Title	Level	Credit Value	GLH	Portfolio of evidence	Exam	Practical	Portfolio of evidence	Exam	Practical
M/616/1232	Artwork and Imaging Software Skills	One	3	27	✓	–	–	–	–	–
T/616/1233	Audio and Video Software	E2	2	20	✓	–	–	–	–	–
A/616/1234	Audio Software Skills	E3	2	20	✓	–	✓	–	–	–
F/616/1235	Audio Software Skills	One	2	18	✓	–	–	–	–	–
J/617/0213	Audio Software Skills	Two	4	24	✓	–	–	–	–	–
L/616/1237	Computer Basics	E3	3	30	✓	–	–	–	–	–
R/616/1238	Computer Security and Privacy	E3	3	30	✓	–	✓	–	–	–
Y/616/1239	Creating and Publishing Websites	One	3	27	✓	–	✓	–	–	–
A/617/0080	Creating and Publishing Websites	Two	5	32	✓	–	✓	–	–	–
R/616/1241	Data Management Software Skills	E3	2	20	✓	–	✓	–	–	–
Y/616/1242	Data Management Software Skills	One	2	18	✓	–	✓	–	–	–
F/617/0081	Data Management Software Skills	Two	4	24	✓	–	✓	–	–	–
H/616/1244	Database Software Skills	E3	2	20	✓	–	✓	–	–	–

ICT					Assessment set by the centre			Assessment set by AIM		
Component Code	Component Title	Level	Credit Value	GLH	Portfolio of evidence	Exam	Practical	Portfolio of evidence	Exam	Practical
K/616/1245	Database Software Skills	One	3	27	✓	–	✓	–	–	–
J/617/0082	Database Software Skills	Two	5	32	✓	–	✓	–	–	–
A/616/1248	Design and Imaging Software Skills	E3	2	20	✓	–	✓	–	–	–
T/616/1250	Design Software Skills	One	3	27	✓	–	✓	–	–	–
A/616/1251	Desktop Publishing Software	E2	2	20	✓	–	✓	–	–	–
F/616/1252	Desktop Publishing Software Skills	E3	2	20	✓	–	✓	–	–	–
L/616/1254	Desktop Publishing Software Skills	One	3	27	✓	–	✓	–	–	–
L/617/0214	Desktop Publishing Software Skills	Two	5	32	✓	–	✓	–	–	–
Y/616/1256	Developing and Presenting Information Using ICT	E1	2	20	✓	–	✓	–	–	–
D/616/1257	Developing and Presenting Information Using ICT	E2	2	20	✓	–	✓	–	–	–
H/616/1258	Digital Lifestyle	E3	3	30	✓	–	✓	–	–	–
K/616/1259	Email Skills	E3	1	10	✓	–	✓	–	–	–
D/616/1260	Email Skills	One	2	18	✓	–	✓	–	–	–
T/617/0076	Email Skills	Two	4	24	✓	–	✓	–	–	–
K/616/1441	Find Information using ICT	E1	1	10	✓	–	✓	–	–	–
M/616/1442	Find Information using ICT	E2	1	10	✓	–	✓	–	–	–

ICT					Assessment set by the centre			Assessment set by AIM		
Component Code	Component Title	Level	Credit Value	GLH	Portfolio of evidence	Exam	Practical	Portfolio of evidence	Exam	Practical
Y/616/1273	Following Safe and Healthy Working Practices When Using ICT	E1	2	20	✓	–	✓	–	–	–
D/616/1274	Following Safe and Healthy Working Practices When Using ICT	E2	2	20	✓	–	✓	–	–	–
H/616/1275	Graphics Software Skills	E3	1	10	✓	–	–	–	–	–
K/616/1276	Imaging Software Skills	One	3	27	✓	–	–	–	–	–
R/617/0215	Imaging Software Skills	Two	5	32	✓	–	–	–	–	–
T/616/1278	Internet Safety for IT Users	One	3	27	✓	–	–	–	✓	–
A/616/1279	IT Communications	One	2	18	✓	–	✓	–	–	–
K/617/0026	IT Communications	Two	3	16	✓	–	–	–	–	–
A/616/1282	IT User Fundamentals	E3	2	20	✓	–	✓	–	–	–
T/616/1281	IT Maintenance for Users	One	2	18	✓	–	✓	–	–	–
F/616/1283	Multimedia Software Skills	One	3	27	✓	–	✓	–	–	–
F/617/0226	PC Maintenance – Hardware	Two	4	24	✓	–	–	–	–	–
R/617/0229	PC Maintenance – Software	Two	4	24	✓	–	✓	–	–	–
J/616/1284	Personal Digital Photograph Processing	E3	1	10	✓	–	✓	–	–	–

ICT					Assessment set by the centre			Assessment set by AIM		
Component Code	Component Title	Level	Credit Value	GLH	Portfolio of evidence	Exam	Practical	Portfolio of evidence	Exam	Practical
L/616/1285	Presentation Software Skills	E3	2	20	✓	–	✓	–	–	–
R/616/1286	Presentation Software Skills	One	3	27	✓	–	✓	–	–	–
A/617/0077	Presentation Software Skills	Two	5	32	✓	–	✓	–	–	–
D/616/1288	Selecting Information Using the Internet	E3	1	10	✓	–	✓	–	–	–
T/616/1443	Send and Receive Information using ICT	E1	1	10	✓	–	✓	–	–	–
A/616/1444	Send and Receive Information using ICT	E2	1	10	✓	–	✓	–	–	–
L/616/1304	Spreadsheet Software Skills	E3	2	20	✓	–	✓	–	–	–
R/616/1305	Spreadsheet Software Skills	One	3	27	✓	–	✓	–	–	–
M/617/0027	Spreadsheet Software Skills	Two	5	32	✓	–	✓	–	–	–
D/616/1307	The Internet and World Wide Web	E3	3	30	✓	–	✓	–	–	–
D/617/0217	Understanding How to Use Computer Aided Design Software	Two	4	24	✓	–	✓	–	–	–
T/617/0028	Use E-Sources to Select Information	Two	4	24	✓	–	✓	–	–	–
D/616/1310	Using a Raspberry Pi	One	3	27	✓	–	✓	–	–	–
H/616/1311	Using Digital Photograph Processing Software	One	2	18	✓	–	✓	–	–	–
K/616/1195	Using ICT in the Workplace	One	3	27	✓	–	✓	–	–	–
D/617/0069	Using ICT in the Workplace	Two	4	24	✓	–	✓	–	–	–

[Back to Contents](#)

ICT					Assessment set by the centre			Assessment set by AIM		
Component Code	Component Title	Level	Credit Value	GLH	Portfolio of evidence	Exam	Practical	Portfolio of evidence	Exam	Practical
H/504/3474	Using ICT Systems	E2	2	20	✓	–	✓	–	–	–
A/505/7526	Using ICT to Select and Exchange Information	E2	2	20	✓	–	✓	–	–	–
A/616/1198	Using ICT to Support Writing	One	1	9	✓	–	✓	–	–	–
F/616/1445	Using ICT: Safe Working Practices	E2	2	20	✓	–	✓	–	–	–
K/616/1312	Using Scratch Programming Language	One	3	27	✓	–	✓	–	–	–
M/616/1313	Using the Internet	One	3	27	✓	–	✓	–	–	–
A/617/0029	Using the Internet	Two	5	32	✓	–	✓	–	–	–
A/616/1315	Video Software Skills	E3	2	20	✓	–	✓	–	–	–
F/616/1316	Video Software Skills	One	2	18	✓	–	✓	–	–	–
Y/617/0216	Video Software Skills	Two	4	24	✓	–	✓	–	–	–
L/616/1318	Word Processing Software Skills	E3	2	20	✓	–	✓	–	–	–
R/616/1319	Word Processing Software Skills	One	3	27	✓	–	✓	–	–	–
M/617/0030	Word Processing Software Skills	Two	5	32	✓	–	✓	–	–	–

[Back to Contents](#)

Literacy					Assessment set by the centre			Assessment set by AIM		
Component Code	Component Title	Level	Credit Value	GLH	Portfolio of evidence	Exam	Practical	Portfolio of evidence	Exam	Practical
L/616/1321	Engage in Discussion	E1	2	20	✓	–	✓	–	–	–
R/616/1322	Engage in Discussion	E2	2	20	✓	–	✓	–	–	–
Y/616/1323	Engage in Discussion	E3	2	20	✓	–	✓	–	–	–
D/616/1324	Engage in Discussion	One	2	18	✓	–	✓	–	–	–
F/617/0033	Engage in Discussion	Two	3	16	✓	–	✓	–	–	–
K/616/1326	Listen and Respond	E1	2	20	✓	–	✓	–	–	–
M/616/1327	Listen and Respond	E2	2	20	✓	–	✓	–	–	–
T/616/1328	Listen and Respond	E3	2	20	✓	–	✓	–	–	–
A/616/1329	Listen and Respond	One	2	18	✓	–	✓	–	–	–
J/617/0034	Listen and Respond	Two	3	16	✓	–	–	–	–	–
T/616/1331	Read for Information	E1	3	30	✓	–	✓	–	–	–
A/616/1332	Read for Information	E2	3	30	✓	–	✓	–	–	–
F/616/1333	Read for Information	E3	3	30	✓	–	✓	–	–	–

[Back to Contents](#)

Literacy					Assessment set by the centre			Assessment set by AIM		
Component Code	Component Title	Level	Credit Value	GLH	Portfolio of evidence	Exam	Practical	Portfolio of evidence	Exam	Practical
J/616/1334	Read for Information	One	3	27	✓	–	✓	–	–	–
L/617/0035	Read for Information	Two	4	24	✓	–	✓	–	–	–
D/616/1338	Read for Purpose and Meaning	E1	3	30	✓	–	✓	–	–	–
F/616/1350	Read for Purpose and Meaning	E2	3	30	✓	–	✓	–	–	–
J/616/1365	Read for Purpose and Meaning	E3	3	30	✓	–	✓	–	–	–
L/616/1366	Read for Purpose and Meaning	One	3	27	✓	–	✓	–	–	–
R/617/0036	Read for Purpose and Meaning	Two	4	24	✓	–	✓	–	–	–
Y/616/1368	Speak to Communicate	E1	2	20	✓	–	✓	–	–	–
D/616/1369	Speak to Communicate	E2	2	20	✓	–	✓	–	–	–
R/616/1370	Speak to Communicate	E3	2	20	✓	–	✓	–	–	–
Y/616/1371	Speak to Communicate	One	2	18	✓	–	✓	–	–	–
Y/617/0037	Speak to Communicate	Two	3	16	✓	–	✓	–	–	–
Y/616/1385	Write Accurately	E2	3	30	✓	–	✓	–	–	–
H/616/1387	Write Accurately	E3	3	30	✓	–	✓	–	–	–

[Back to Contents](#)

Literacy					Assessment set by the centre			Assessment set by AIM		
Component Code	Component Title	Level	Credit Value	GLH	Portfolio of evidence	Exam	Practical	Portfolio of evidence	Exam	Practical
M/617/0044	Write Fluently and Accurately	Two	4	24	✓	–	✓	–	–	–
K/616/1374	Write to Communicate	E1	3	30	✓	–	✓	–	–	–
M/616/1375	Write to Communicate	E2	3	30	✓	–	✓	–	–	–
T/616/1376	Write to Communicate	E3	3	30	✓	–	✓	–	–	–
J/616/1379	Write to Communicate	One	3	27	✓	–	✓	–	–	–
D/617/0038	Write to Communicate	Two	4	24	✓	–	✓	–	–	–
L/616/1383	Write with Accuracy	One	3	27	✓	–	✓	–	–	–

Mathematics					Assessment set by the centre			Assessment set by AIM		
Component Code	Component Title	Level	Credit Value	GLH	Portfolio of evidence	Exam	Practical	Portfolio of evidence	Exam	Practical
H/616/1390	Adding and Subtracting	E1	3	30	✓	–	✓	–	–	–
M/616/1392	Addition, Subtraction and Multiplication	E2	3	30	✓	–	✓	–	–	–
A/616/1394	Making Calculations	E3	3	30	✓	–	✓	–	–	–
J/616/1396	Making Calculations	One	3	27	✓	–	✓	–	–	–
T/617/0045	Making Calculations	Two	4	24	✓	–	✓	–	–	–
L/616/1402	Money, Time and Temperature	E2	3	30	✓	–	✓	–	–	–
Y/616/1404	Money, Time and Temperature	E3	3	30	✓	–	✓	–	–	–
H/616/1406	Money, Time and Temperature	One	3	27	✓	–	✓	–	–	–
A/617/0046	Money, Time and Temperature	Two	4	24	✓	–	✓	–	–	–

Mathematics										
Component Code	Component Title	Level	Credit Value	GLH	Assessment set by the centre			Assessment set by AIM		
					Portfolio of evidence	Exam	Practical	Portfolio of evidence	Exam	Practical
M/616/1408	Numbers, Decimals, Fractions and Percentages	One	3	27	✓	–	✓	–	–	–
J/617/0048	Numbers, Decimals, Fractions and Percentages	Two	4	24	✓	–	✓	–	–	–
M/616/1411	Numerical Relationships, Algebra and Ratios	One	2	18	✓	–	✓	–	–	–
F/617/0050	Numerical Relationships, Algebra and Ratio	Two	3	16	✓	–	✓	–	–	–
T/616/1412	Using and Communicating Data	E1	3	30	✓	–	✓	–	–	–
A/616/1413	Using and Communicating Data	E2	3	30	✓	–	✓	–	–	–
F/616/1414	Using and Communicating Data	E3	3	30	✓	–	✓	–	–	–
J/616/1415	Using and Communicating Data	One	3	27	✓	–	✓	–	–	–
J/617/0051	Using and Communicating Data	Two	4	24	✓	–	✓	–	–	–
R/616/1417	Using Probability	One	2	18	✓	–	✓	–	–	–
L/617/0052	Using Probability	Two	3	16	✓	–	✓	–	–	–
D/616/1419	Using Size, Shape and Measures	E3	3	30	✓	–	✓	–	–	–
R/616/1420	Using Size, Shape and Space	E1	3	30	✓	–	✓	–	–	–
Y/616/1421	Using Size, Shape and Space	One	3	27	✓	–	✓	–	–	–
Y/617/0054	Using Size, Shape and Space	Two	4	24	✓	–	✓	–	–	–

Mathematics										
Component Code	Component Title	Level	Credit Value	GLH	Assessment set by the centre			Assessment set by AIM		
					Portfolio of evidence	Exam	Practical	Portfolio of evidence	Exam	Practical
H/616/1423	Using Whole Numbers	E1	2	20	✓	–	✓	–	–	–
T/616/1426	Using Whole Numbers and Fractions	E2	2	20	✓	–	✓	–	–	–
F/616/1431	Using Whole Numbers, Decimals, Fractions and Percentages	E3	2	20	✓	–	✓	–	–	–

Personal Development					Assessment set by the centre			Assessment set by AIM		
Component Code	Component Title	Level	Credit Value	GLH	Portfolio of evidence	Exam	Practical	Portfolio of evidence	Exam	Practical
H/616/5016	Action Planning to Improve Performance	E2	2	20	✓	-	-	-	-	-
A/616/4358	Adjusting to a New Setting	E2	3	30	✓	-	-	-	-	-
R/616/0347	Assertiveness and Decision Making Skills	E3	3	30	✓	-	✓	-	-	-
Y/616/0348	Assertiveness and Decision Making Skills	One	3	27	✓	-	✓	-	-	-
L/616/9953	Assertiveness and Decision Making Skills	Two	4	24	✓	-	✓	-	-	-
R/616/0350	Being Part of a Group	E1	2	20	✓	-	✓	-	-	-
Y/616/0351	Being Part of a Group	E2	2	20	✓	-	✓	-	-	-
F/616/4829	Beliefs and Values	One	1	9	✓	-	-	-	-	-
T/616/4830	Beliefs and Values	Two	1	8	✓	-	-	-	-	-
A/616/0357	Building Confidence and Self Esteem	E1	2	20	✓	-	-	-	-	-
F/616/0358	Building Confidence and Self Esteem	E2	2	20	✓	-	-	-	-	-
J/616/0359	Building Confidence and Self Esteem	E3	3	30	✓	-	-	-	-	-
A/616/0360	Building Confidence and Self Esteem	One	3	27	✓	-	-	-	✓	-
M/616/9962	Building Confidence and Self Esteem	Two	4	24	✓	-	-	-	-	-
R/616/0364	Career Planning	E3	3	30	✓	-	-	-	-	-
Y/616/0365	Career Planning	One	3	27	✓	-	-	-	-	-
M/616/9959	Career Planning	Two	4	24	✓	-	-	-	-	-

[Back to Contents](#)

Personal Development					Assessment set by the centre			Assessment set by AIM		
Component Code	Component Title	Level	Credit Value	GLH	Portfolio of evidence	Exam	Practical	Portfolio of evidence	Exam	Practical
H/616/0367	Career Planning	Three	3	21	✓	-	-	-	-	-
R/616/4382	Changing Roles and Relationships in Adolescence	One	3	27	✓	-	-	-	-	-
Y/616/4383	Changing Roles and Relationships in Adolescence	Two	4	24	✓	-	-	-	-	-
A/616/4389	Communicating with Music	E1	3	30	✓	-	✓	-	-	-
D/616/0383	Communication Skills for Group and Teamwork	E3	3	30	✓	-	-	-	-	-
H/616/0384	Communication Skills for Group and Teamwork	One	3	27	✓	-	✓	-	-	-
T/617/0062	Communication Skills for Group and Teamwork	Two	4	24	✓	-	✓	-	-	-
M/616/4390	Community Involvement	One	1	9	✓	-	-	-	-	-
T/616/4391	Community Project	One	3	27	✓	-	✓	-	-	-
A/616/4392	Completing Tasks	E2	3	30	✓	-	✓	-	-	-
J/616/4394	Contribute to and Make Use of Information, Advice and Guidance	E3	3	30	✓	-	-	-	-	-
A/616/5655	Contribute to and Make Use of Information, Advice and Guidance	One	3	27	✓	-	-	-	-	-

[Back to Contents](#)

Personal Development					Assessment set by the centre			Assessment set by AIM		
Component Code	Component Title	Level	Credit Value	GLH	Portfolio of evidence	Exam	Practical	Portfolio of evidence	Exam	Practical
M/616/4695	Contributing to Discussions	One	1	10	✓	–	✓	–	–	–
A/616/5025	Coping Strategies	One	3	27	✓	–	–	–	–	–
K/616/5988	Dealing with Change	E3	3	30	✓	–	–	–	–	–
L/616/5658	Dealing with Difficult Situations	E3	1	10	✓	–	✓	–	–	–
T/616/4410	Dealing with Difficult Situations	One	1	9	✓	–	✓	–	–	–
A/616/4411	Dealing with Problems	E1	4	40	✓	–	–	–	–	–
Y/616/4416	Dealing with Problems	E2	3	30	✓	–	✓	–	–	–
D/616/4417	Dealing with Problems in Daily Life	One	2	18	✓	–	✓	–	–	–
M/616/0453	Developing Assertiveness	E1	2	20	✓	–	✓	–	–	–
T/616/0454	Developing Assertiveness	E2	2	20	✓	–	✓	–	–	–
M/616/5989	Developing Assertiveness	Two	1	8	✓	–	✓	–	–	–
H/616/5990	Discover Local History	E3	3	30	✓	–	✓	–	–	–
F/616/4832	Discover Local History	One	3	27	✓	–	✓	–	–	–
L/616/4834	Enrichment Activity – Personal Well-Being	One	1	9	✓	–	✓	–	–	–
R/616/4446	Enrichment Activity – Personal Well-Being	Two	1	8	✓	–	✓	–	–	–
F/616/4703	Exploring Art	E1	3	30	✓	–	✓	–	–	–

[Back to Contents](#)

Personal Development					Assessment set by the centre			Assessment set by AIM		
Component Code	Component Title	Level	Credit Value	GLH	Portfolio of evidence	Exam	Practical	Portfolio of evidence	Exam	Practical
J/616/4704	Exploring Art	E2	3	30	✓	–	✓	–	–	–
L/616/4705	Exploring Dance	E1	3	30	✓	–	✓	–	–	–
R/616/4706	Exploring Dance	E2	3	30	✓	–	✓	–	–	–
H/616/4709	Exploring Dance	E3	3	30	✓	–	✓	–	–	–
D/616/4711	Exploring Music	E1	3	30	✓	–	✓	–	–	–
H/616/4712	Exploring Music	E2	3	30	✓	–	✓	–	–	–
Y/616/4450	Exploring Music	E3	3	30	✓	–	✓	–	–	–
K/616/4713	Exploring Performance	E1	3	30	✓	–	✓	–	–	–
M/616/4714	Exploring Performance	E2	3	30	✓	–	✓	–	–	–
T/616/4715	Exploring Performance	E3	3	30	✓	–	✓	–	–	–
K/616/5053	Following Instructions	E1	2	20	✓	–	✓	–	–	–
D/616/4739	Following Instructions	E2	2	20	✓	–	✓	–	–	–
F/616/6001	Following Instructions	E3	2	20	✓	–	✓	–	–	–
A/616/9964	Improving Own Learning and Performance	Two	4	24	✓	–	✓	–	–	–
L/617/1041	Improving Own Performance	Two	3	16	✓	–	✓	–	–	–

[Back to Contents](#)

Personal Development					Assessment set by the centre			Assessment set by AIM		
Component Code	Component Title	Level	Credit Value	GLH	Portfolio of evidence	Exam	Practical	Portfolio of evidence	Exam	Practical
M/616/4793	Interpersonal Skills	One	3	27	✓	–	–	–	✓	–
R/617/1042	Interpersonal Skills	Two	4	24	✓	–	–	–	–	–
Y/617/1043	Interpersonal Skills	Three	4	21	✓	–	–	–	–	–
L/616/5661	Introduction to the Skills – Delivering Peer Advocacy	One	3	27	✓	–	✓	–	–	–
K/616/4811	Lesbian, Gay, Bisexual and Trans Awareness	One	2	18	✓	–	–	–	–	–
D/617/1058	Lesbian, Gay, Bisexual and Trans Awareness	Two	3	16	✓	–	–	–	–	–
L/616/4820	Making Choices	E1	1	10	✓	–	–	–	–	–
R/616/4821	Making Choices	E2	4	40	✓	–	–	–	–	–
Y/616/4822	Making Choices	E3	1	10	✓	–	–	–	–	–
K/616/4842	Making Decisions	One	1	9	✓	–	–	–	–	–
M/616/4843	Making Decisions	Two	1	8	✓	–	–	–	–	–
J/616/4847	Motivation	One	1	9	✓	–	–	–	–	–
L/616/4848	Oral Storytelling Skills	One	3	27	✓	–	✓	–	–	–
K/617/1063	Oral Storytelling Skills	Two	4	24	✓	–	✓	–	–	–
J/616/4850	Outdoor Pursuits	E1	3	30	✓	–	✓	–	–	–
A/616/5073	Participating in Leisure Activities	E3	3	30	✓	–	✓	–	–	–
L/616/4851	Participating in Outdoor Pursuits	E2	3	30	✓	–	✓	–	–	–

[Back to Contents](#)

Personal Development					Assessment set by the centre			Assessment set by AIM		
Component Code	Component Title	Level	Credit Value	GLH	Portfolio of evidence	Exam	Practical	Portfolio of evidence	Exam	Practical
R/616/4852	Participation in Team Activities	E1	3	30	✓	–	✓	–	–	–
D/616/5714	Personal Action Planning	E2	2	20	✓	–	–	–	–	–
F/616/5074	Personal and Interpersonal Conflict	One	3	27	✓	–	–	–	–	–
T/616/4858	Personal Awareness	E1	2	20	✓	–	–	–	–	–
J/616/5075	Personal Awareness	E3	3	30	✓	–	–	–	–	–
A/616/4859	Personal Awareness	One	3	27	✓	–	–	–	–	–
R/616/6049	Personal Development	E3	3	30	✓	–	–	–	–	–
A/616/4862	Personal Development	One	3	27	✓	–	–	–	–	–
F/617/1067	Personal Development	Two	4	24	✓	–	–	–	–	–
T/616/5721	Personal Identity and Self-Esteem	One	1	9	✓	–	–	–	–	–
R/616/5077	Personal Identity and Self-Esteem	Two	1	8	✓	–	–	–	–	–
D/616/5079	Personal Skills Audit	One	1	9	✓	–	–	–	–	–
J/616/4881	Personal Skills Audit	Two	1	8	✓	–	–	–	–	–
L/616/4882	Personal Skills Audit	Three	1	7	✓	–	–	–	–	–
H/616/4886	Plan and Review Own Skills and Qualities	E2	2	20	✓	–	–	–	–	–
M/616/4891	Planning and Reviewing Learning	One	2	18	✓	–	–	–	–	–

[Back to Contents](#)

Personal Development					Assessment set by the centre			Assessment set by AIM		
Component Code	Component Title	Level	Credit Value	GLH	Portfolio of evidence	Exam	Practical	Portfolio of evidence	Exam	Practical
R/616/4897	Prejudice and Discrimination	One	3	27	✓	–	–	–	–	–
H/617/1076	Prejudice and Discrimination	Two	4	24	✓	–	–	–	–	–
D/616/4899	Preparing for the Future	E1	3	30	✓	–	–	–	–	–
J/616/4900	Preparing for the Future	E2	4	40	✓	–	–	–	–	–
Y/616/1225	Presentation Skills	One	2	18	✓	–	✓	–	–	–
F/616/9996	Presentation Skills	Two	3	16	✓	–	✓	–	–	–
T/617/1079	Presentation Skills	Three	4	21	✓	–	✓	–	–	–
K/617/1080	Problem Solving Skills	Two	4	24	✓	–	–	–	–	–
D/616/4904	Recognising Own Achievements	E1	2	20	✓	–	–	–	–	–
H/616/4905	Recognising Own Achievements	E2	2	20	✓	–	–	–	–	–
K/616/0922	Reviewing and Reflecting on Own Progress	E1	3	30	✓	–	–	–	–	–
M/616/0923	Reviewing and Reflecting on Own Progress	E2	3	30	✓	–	–	–	–	–
A/616/5722	Self Development	E3	1	10	✓	–	–	–	–	–
A/617/1083	Self Development	Two	4	24	✓	–	–	–	–	–
D/616/5728	Self-Awareness	E2	2	20	✓	–	–	–	–	–
Y/616/5808	Setting Targets	E1	2	20	✓	–	–	–	–	–
A/616/5736	Signing and Receiving Skills in British Sign Language	E3	3	30	✓	–	✓	–	–	–

[Back to Contents](#)

Personal Development					Assessment set by the centre			Assessment set by AIM		
Component Code	Component Title	Level	Credit Value	GLH	Portfolio of evidence	Exam	Practical	Portfolio of evidence	Exam	Practical
L/616/6888	Signing and Receiving Skills in British Sign Language	One	3	27	✓	–	✓	–	–	–
F/616/5740	Skills for Lip Reading	E3	3	30	✓	–	✓	–	–	–
M/616/5748	Skills for Lip Reading	One	6	54	✓	–	✓	–	–	–
T/616/5749	Speaking and Listening in a Foreign Language	E3	3	30	✓	–	✓	–	–	–
R/616/5757	Stress and Stress Management Techniques	One	3	27	✓	–	–	–	–	–
M/617/0061	Stress and Stress Management Techniques	Two	4	24	✓	–	–	–	–	–
T/617/0188	Stress and Stress Management Techniques	Three	8	42	✓	–	–	–	–	–
Y/616/5761	Stress Management	E3	3	30	✓	–	–	–	–	–
H/616/5763	Take Part in an Activity	E3	1	10	✓	–	✓	–	–	–
K/616/5764	Take Part in an Activity	One	1	9	✓	–	✓	–	–	–
Y/617/1091	Take Part in an Activity	Two	3	16	✓	–	✓	–	–	–
T/616/1099	Teamwork Skills	E3	3	30	✓	–	✓	–	–	–
D/616/1100	Teamwork Skills	One	3	27	✓	–	✓	–	–	–
L/617/0066	Teamwork Skills	Two	4	24	✓	–	✓	–	–	–
A/617/0189	Teamwork Skills	Three	3	21	✓	–	✓	–	–	–

[Back to Contents](#)

Personal Development					Assessment set by the centre			Assessment set by AIM		
Component Code	Component Title	Level	Credit Value	GLH	Portfolio of evidence	Exam	Practical	Portfolio of evidence	Exam	Practical
H/505/1302	Understanding Discrimination	E3	3	30	✓	–	–	–	–	–
M/616/5765	Understanding Feelings and Emotions	One	1	9	✓	–	–	–	–	–
T/616/5766	Understanding Feelings and Emotions	Two	1	8	✓	–	–	–	–	–
A/616/5767	Understanding Motivation	One	1	9	✓	–	–	–	–	–
F/616/5768	Understanding Motivation	Two	1	8	✓	–	–	–	–	–
J/616/5769	Understanding Self in Conflict	One	3	27	✓	–	–	–	–	–
K/616/5943	Understanding Stress	One	1	9	✓	–	–	–	–	–
H/616/5942	Understanding Stress	Two	1	8	✓	–	–	–	–	–

Relationships					Assessment set by the centre			Assessment set by AIM		
Component Code	Component Title	Level	Credit Value	GLH	Portfolio of evidence	Exam	Practical	Portfolio of evidence	Exam	Practical
T/616/4360	Adult Relationships	E3	1	10	✓	–	–	–	–	–
D/616/4370	Behaviour in Conflict	E3	3	30	✓	–	–	–	–	–
K/616/5022	Behaviour in Conflict	One	3	27	✓	–	–	–	–	–
M/617/0996	Behaviour in Conflict	Two	4	24	✓	–	–	–	–	–
R/616/4379	Bullying and Harassment	E3	1	10	✓	–	–	–	–	–
Y/617/1009	Dealing With Bullying	Two	3	16	✓	–	–	–	–	–
H/616/4435	Domestic Abuse Awareness	One	2	20	✓	–	–	–	–	–
M/617/1016	Domestic Abuse Awareness	Two	3	16	✓	–	–	–	–	–
F/617/0985	Family Relations: A Christian Perspective	One	3	27	✓	–	–	–	–	–
J/616/4735	Family Relationships	E3	3	30	✓	–	–	–	–	–
L/616/4736	Family Relationships	One	3	27	✓	–	–	–	–	–
H/617/1028	Family Relationships	Two	4	24	✓	–	–	–	–	–
A/616/5056	Human Behaviour in Relationships	One	3	27	✓	–	–	–	–	–
J/617/1037	Human Behaviour in Relationships	Two	4	24	✓	–	–	–	–	–

Relationships					Assessment set by the centre			Assessment set by AIM		
Component Code	Component Title	Level	Credit Value	GLH	Portfolio of evidence	Exam	Practical	Portfolio of evidence	Exam	Practical
M/616/6012	Managing Personal Relationships	E3	2	20	✓	-	-	-	-	-
Y/617/1060	Managing Personal Relationships	Two	4	24	✓	-	-	-	-	-
Y/616/6022	Personal Relationships	E3	3	30	✓	-	-	-	-	-
D/616/6023	Personal Relationships	One	3	27	✓	-	-	-	-	-
D/616/5082	Recognising and Dealing with Bullying	One	2	18	✓	-	-	-	-	-
Y/616/4903	Recognising and Safeguarding Against Knife Crime	One	4	36	✓	-	-	-	-	-
A/616/5770	Sex and Relationship Education	E3	3	30	✓	-	-	-	-	-
F/616/5947	Sex and Relationship Education	One	3	27	✓	-	-	-	-	-
F/617/1084	Sex and Relationship Education	Two	4	24	✓	-	-	-	-	-
F/616/5771	Understanding Relationships	E1	2	20	✓	-	-	-	-	-
R/616/5774	Understanding Relationships	E2	2	20	✓	-	-	-	-	-
M/616/5944	Understanding Relationships	E3	2	20	✓	-	-	-	-	-
L/616/5773	Understanding Relationships	One	2	18	✓	-	-	-	-	-
T/617/1101	Understanding Relationships	Two	3	16	✓	-	-	-	-	-

Study Skills					Assessment set by the centre			Assessment set by AIM		
Component Code	Component Title	Level	Credit Value	GLH	Portfolio of evidence	Exam	Practical	Portfolio of evidence	Exam	Practical
T/616/4827	Approaches to Learning	E3	1	10	✓	-	-	-	-	-
A/616/4828	Approaches to Learning	One	1	9	✓	-	-	-	-	-
H/616/4368	Beginning College	E1	3	30	✓	-	-	-	-	-
K/616/4369	Beginning College	E2	3	30	✓	-	-	-	-	-
D/616/5020	Beginning to Study	E1	3	30	✓	-	-	-	-	-
H/616/5021	Beginning to Study	E2	3	30	✓	-	-	-	-	-
Y/616/5937	College Induction	E3	3	30	✓	-	-	-	-	-
M/616/5023	College Induction	One	3	27	✓	-	-	-	-	-
J/617/1006	College Induction	Two	4	24	✓	-	-	-	-	-
H/616/0451	Developing a Personal Learning Programme	E3	3	30	✓	-	-	-	-	-
D/616/4448	Examination Skills	Two	1	8	✓	-	-	-	-	-
T/616/4701	Examination Skills	Three	1	7	✓	-	-	-	-	-
M/616/4745	Getting the Most Out of Training	E3	1	10	✓	-	-	-	-	-
T/616/4746	Getting the Most Out of Training	One	1	9	✓	-	-	-	-	-
F/616/5057	Improving Own Learning and Performance	One	3	27	✓	-	-	-	-	-
Y/617/0183	Improving Own Learning and Performance	Three	3	21	✓	-	-	-	-	-
K/616/4789	Improving Own Spelling	E3	1	10	✓	-	-	-	-	-
J/616/5058	Independent Enquiry	One	1	9	✓	-	-	-	-	-
L/616/5059	Independent Enquiry	Two	1	8	✓	-	-	-	-	-

Study Skills					Assessment set by the centre			Assessment set by AIM		
Component Code	Component Title	Level	Credit Value	GLH	Portfolio of evidence	Exam	Practical	Portfolio of evidence	Exam	Practical
H/616/4791	Induction to a Training Course	E3	3	30	✓	–	–	–	–	–
M/616/6009	Induction to Study	One	3	27	✓	–	–	–	–	–
D/616/4806	Knowing How You Learn	E1	3	30	✓	–	–	–	–	–
Y/616/5775	Managing Study	E3	3	30	✓	–	–	–	–	–
A/616/4845	Managing Study	One	3	27	✓	–	–	–	–	–
D/617/1061	Managing Study	Two	4	24	✓	–	–	–	–	–
L/616/6017	Personal Learning Goals	E3	3	30	✓	–	–	–	–	–
R/616/6018	Personal Learning Goals	One	3	27	✓	–	–	–	–	–
F/616/6029	Personal Learning Skills	E3	3	30	✓	–	–	–	–	–
L/616/6020	Personal Learning Skills	One	6	54	✓	–	–	–	–	–
L/617/1069	Personal Learning Skills	Two	8	48	✓	–	–	–	–	–
R/616/4883	Personal Study Skills	E3	3	30	✓	–	–	–	–	–
L/617/1072	Personal Study Skills	Three	8	42	✓	–	–	–	–	–
R/616/5080	Preparing for Controlled Assessment	One	1	9	✓	–	–	–	–	–
T/616/5086	Referencing Skills	Two	1	8	✓	–	–	–	–	–
F/616/0912	Report Writing	Two	1	8	✓	–	–	–	–	–
J/617/0017	Research Skills	Two	4	24	✓	–	–	–	–	–
D/616/5129	Research Skills	Three	6	42	✓	–	–	–	–	–

[Back to Contents](#)

69

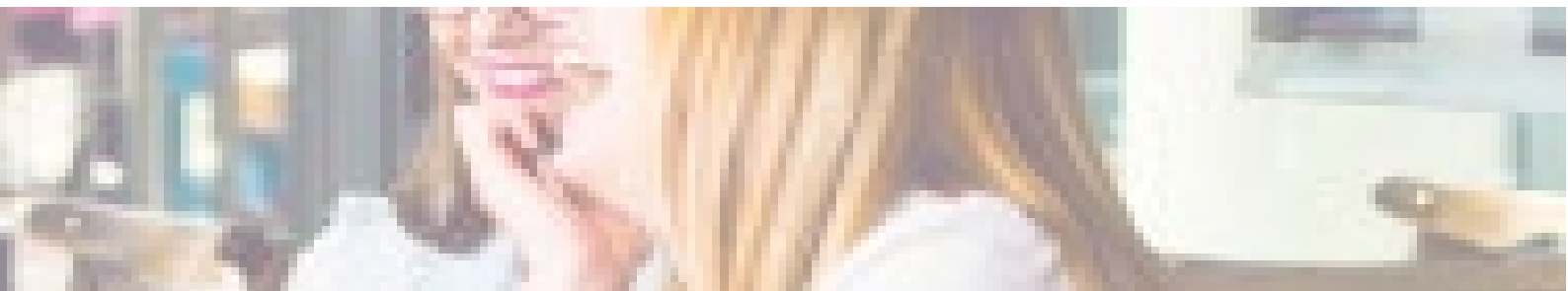
Study Skills					Assessment set by the centre			Assessment set by AIM		
Component Code	Component Title	Level	Credit Value	GLH	Portfolio of evidence	Exam	Practical	Portfolio of evidence	Exam	Practical
T/616/6030	Research Skills and Practice	Two	1	8	✓	–	–	–	–	–
D/616/5776	Skills for Online and Blended Learning	One	3	27	✓	–	–	–	–	–
D/616/1114	Time Management Skills	E1	1	10	✓	–	–	–	–	–
H/616/1115	Time Management Skills	E2	1	10	✓	–	–	–	–	–

[Back to Contents](#)

70

Section Three

Assessment



Centre Staff Requirements

As an Awarding Organisation, we require that:

Tutors have relevant teaching experience and/or a qualification, and experience and/or a qualification in the relevant subject area. Suitable teaching qualifications include:

- Level 3 or 4 Preparing to Teach in the Lifelong Learning Sector (PTLLS) or above
- Level 3 Education and Training or above
- Diploma or Certificate in Education
- Bachelors or Masters Degree in Education

Assessors have an assessor qualification or evidence of recent relevant experience. Suitable assessor qualifications include:

- Level 3 Award in Assessing Competence in the Work Environment
- Level 3 Certificate in Assessing Vocational Achievement
- A1 Assess Candidate Performance using a Range of Methods
- D32 Assess Candidate Performance and D33 Assess Candidate using Differing Sources of Evidence

Internal Verifiers (IV) have an internal verification qualification or evidence of recent relevant experience. Suitable internal verification qualifications include:

- Level 4 Award in Internal Quality Assurance of Assessment Processes and Practice
- Level 4 Certificate in Leading the Internal Quality Assurance of Assessment Processes and Practice
- V1 Conduct Internal Quality Assurance of the Assessment Process
- D34 Internally Verify the Assessment Process

How these Qualifications are Assessed

These qualifications may be assessed through:

- 1) an internally set, internally marked and externally verified portfolio of evidence. Guidance on our expectations is available in 'A Guide to Assessing AIM Qualifications' available in Section 5: Appendices.
- 2) an externally set, externally marked online multiple choice exam (for particular components only). The online multiple choice exam must be invigilated by an AIM approved invigilator.

Centres may use one or both of the above assessment methods in the assessment of the qualification.

Where a multiple choice exam is available for a particular component, this will be stated on the individual component. Where a component may be assessed through either a portfolio of evidence, or an externally set, externally marked online multiple choice exam, the centre must choose one of these assessment methods in the assessment of that component.

Entry 1 Achievement Continuum

Learners completing Entry 1 components within these qualifications are assessed using the **Entry 1 Achievement Continuum**. The Continuum describes the characteristics the learner should display at each of the 10 stages, from Encounter to Application.

Assessors may record their assessment judgements on the **Entry 1 Learner Transcript Template** indicating the stage on the continuum at which the learner has achieved the assessment. Where possible, the Assessor statement should use the terminology of the Achievement Continuum to reflect what the learner has achieved.



Operational Guidance

Section Four

Offering this Qualification

Centres wishing to offer this qualification must be an AIM recognised centre. New centres can apply to become a centre using the centre recognition application process on our website (www.aim-group.org.uk).

We can advise centres of the best and most efficient methods for offering this qualification. All procedures for the use of this qualification, including approval, registration of learners, verification and certification will be completed through AIM and all centres will have an allocated customer experience advisor to support them.

Approval to Offer the Qualification

Centres wishing to offer this qualification must complete and submit a Qualification Approval request (found on the AIM website). Some qualifications require centres to have specific resources in place and/or their assessors/ internal verifiers should hold certain qualifications. Where this is the case, centres must provide evidence of resources/staff qualifications when completing the Qualification Approval request.

Registration and Certification

Once your centre has approval to offer a qualification, you will be able to register learners using the AIM portal. Learners must be registered onto the correct qualification via the portal. Centres then select their chosen components.

For all registration and certification processes, please refer to the portal guidance document which can be downloaded from our website (www.aim-group.org.uk). Details of assessment, internal verification and external verification can be found in Appendix 1 - A guide to assessing AIM qualifications of this handbook.

Learners achieving a qualification will be issued with a qualification certificate detailing the achieved qualification and components. Learners who have not achieved a qualification will, on request, be issued with a component certificate detailing the components achieved.

Scheduling learners for the online Multiple Choice Question (MCQ) assessments

Once your learners have been registered against the relevant qualification(s) using the process above, you are now able to schedule your learners for the MCQ assessments using XAMS. Please refer to the XAMS centre guidance document for details.

Please note you need to schedule your learners at least 48 hours before the planned time of assessment.



Delivering the MCQ assessments

Assessments must be delivered following the requirements in the AIM invigilation guidance for external assessments.

At the end of the MCQ assessment

Once the learner has completed the assessment, you can check the result in the results screen on XAMs. The results are automatically sent to AIM, and where learners have met the rules of combination for the particular qualification, they will be issued with a qualification certificate with details of the qualification and components achieved. Please refer to the Being an AIM centre document for service standard times on the issuing of learner certificates.

Fees and Charges

The AIM Fees and Charges brochure includes all qualification charges and is available on our website. Please note that registrations will not be processed if centre fees have not been paid.



Section Five

Appendices

APPENDICES AND LINKS

Select an appendix from the list below to view the document.

Appendix

1. A Guide to Assessing AIM Qualifications
2. Entry 1 Achievement Continuum
3. Entry 1 Learner Transcript Template
4. Guidance for using Entry 1 Assessment Continuum and Exemplar Learner Transcripts





+44 (0)1332 341822



enquiries@aim-group.org.uk



www.aim-group.org.uk

AIM Qualifications and Assessment Group

3 Pride Point Drive

Pride Park

Derby

DE24 8BX